

LEA Name : West Chester Area SD
Address : 829 Paoli Pike
West Chester , PA 19380

County : Chester
AUN Number : 124159002
LEA Type : SD

Annual Financial Report Accuracy Certification Statement

For Fiscal Year Ending
6/30/2016

Pennsylvania Department of Education

&

Office of Comptroller Operations

PDE-2056: Intermediate Unit

PDE-2057: School District, AVTS/CTC, Charter School,
and Special Program Jointure

CERTIFICATION: By signing this page I agree that the electronic data submitted is a complete and accurate statement of the financial operations and status of the local education agency for the fiscal year. It has been prepared in accordance with generally accepted accounting principles and established Commonwealth of PA reporting guidelines.



Chief School Administrator Signature

10-27-16

Date



Board Secretary Signature

10/25/2016

Date

Justin Matys

Contact Person

(484)266-1021 Ext :

Contact Person Telephone Number

jmatys@wcasd.net

Contact Person E-mail Address

(484)266-1078

Contact Person Fax Number

Audit Certification
Annual Financial Report:
For Fiscal Year Ending **6/30/2016**
(Pursuant to PA School Code Section 218(b))

LEA Name : West Chester Area SD
AUN Number : 124159002
County : Chester

Audit Certification Due: 12/31/2016

This certification is applicable to:

Orig. Annual Financial Report submitted to
Comptroller Operations: 10/31/2016
Date

Annual Financial Report revisions submitted on: _____
Date

Auditing Firm:

Barbacane, Thornton & Company LLP

Auditor Contact Name: Steve Kutsuflakis, CPA

Auditor Phone: 302-468-4008

Auditor E-mail: skutsuflakis@btcpa.com

CERTIFICATION: By signing this page I agree that the financial statements of the school have been properly audited as noted above pursuant to Article XXIV, and in the auditor's professional opinion, the Annual Financial Report (PDE-2057) submitted on the date referenced is materially consistent with the audited financial statements.

Chief School Administrator


Signature

12/09/2016
Date

Board Secretary


Signature

12/09/2016
Date

Justin Matys

Contact Person

jmatys@wcasd.net

Contact Person E-mail Address

(484)266-1021

Ext :

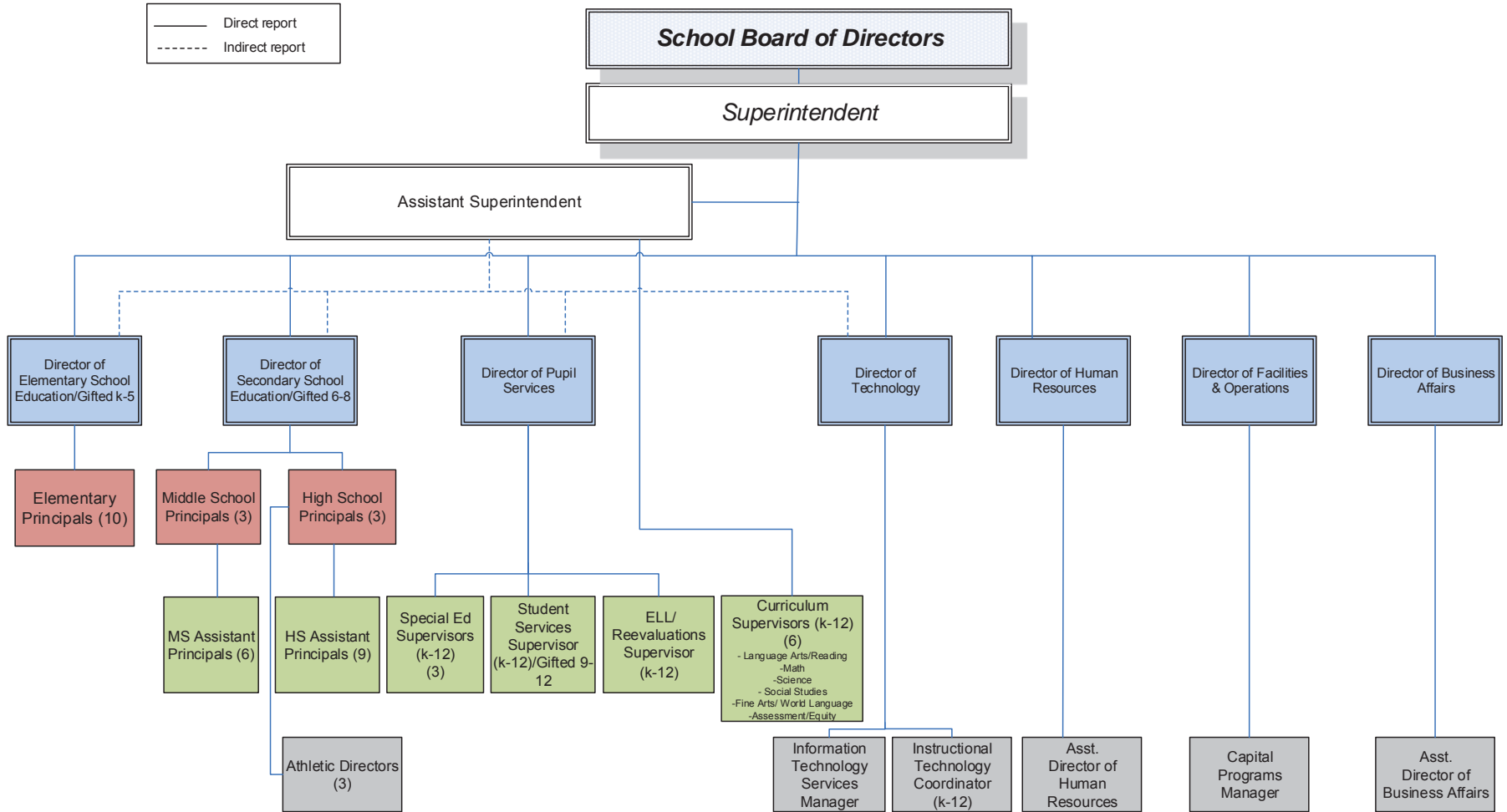
Contact Person Telephone Number

(484)266-1078

Contact Person Fax Number

West Chester Area School District Management Team

June 2015



<u>Val Number</u>	<u>Description</u>	<u>Justification</u>
30501	Revenue Detail: AFR amount must equal or exceed PDE FAI System amount. 7311, AFR Rev Detail: \$2,032,481.55 7311, PDE FAI System: \$2,051,175.84	\$18,694.29 was records as a receivable in 2014 -15
50160	SOIN: All Governmental Fund General Obligation Bonds must include an amount for Interest Paid during Fiscal Year. Correct data or enter a justification.	Series A of 2016 was a new bond issue with no interest payments in 2015-16

Amounts Expressed in Whole Dollars

<u>General Fund</u>	<u>Public Purpose Trust</u>	<u>Other Compt Approved</u>	<u>Athletic / Activity</u>	<u>Capital Reserve (690.</u>
<u>(10)</u>	<u>(27)</u>	<u>(28)</u>	<u>(29)</u>	<u>1850)</u>
				<u>(31)</u>

Assets And Deferred Outflows Of Resources

Assets

0100 Cash and Cash Equivalents	8,871,143
0110 Investments	30,372,667
0120 Taxes Receivable	3,615,153
0130 Due From Other Funds	
0141 Due From Other Governments	4,598,096
0142 State Revenue Receivable	
0143 Federal Revenue Receivable	
0145 Other Intergovernmental Revenue Receivable	
0146 Due from Primary Government	
0147 Due from Component Unit	
0150 Other Receivables	1,709,901
0170 Inventories	
0180 Prepaid Expenses (Expenditures)	2,066,625
0190 Other Current Assets	

Total Assets \$51,233,585

0910 Deferred Outflows of Resources

Total Assets And Deferred Outflows Of Resources \$51,233,585

Amounts Expressed in Whole Dollars

	<u>Capital Reserve (1431)</u> <u>(32)</u>	<u>Other Capital Projects</u> <u>Fund</u> <u>(39)</u>	<u>Debt Service</u> <u>(40)</u>	<u>Permanent</u> <u>(90)</u>	<u>Total Governmental</u> <u>Funds</u>
Assets And Deferred Outflows Of Resources					
Assets					
0100 Cash and Cash Equivalents	9,273,363	618,443			18,762,949
0110 Investments	17,940,555	5,177,320			53,490,542
0120 Taxes Receivable					3,615,153
0130 Due From Other Funds					
0141 Due From Other Governments					4,598,096
0142 State Revenue Receivable					
0143 Federal Revenue Receivable					
0145 Other Intergovernmental Revenue Receivable					
0146 Due from Primary Government					
0147 Due from Component Unit					
0150 Other Receivables					1,709,901
0170 Inventories					
0180 Prepaid Expenses (Expenditures)	368,350				2,434,975
0190 Other Current Assets					
Total Assets	\$27,582,268	\$5,795,763			\$84,611,616
0910 Deferred Outflows of Resources					
Total Assets And Deferred Outflows Of Resources	\$27,582,268	\$5,795,763			\$84,611,616

Amounts Expressed in Whole Dollars

	<u>General Fund</u> <u>(10)</u>	<u>Public Purpose Trust</u> <u>(27)</u>	<u>Other Compt Approved</u> <u>(28)</u>	<u>Athletic / Activity</u> <u>(29)</u>	<u>Capital Reserve (690.</u> <u>1850)</u> <u>(31)</u>
Liabilities And Deferred Inflows Of Resources And Fund Balances					
Liabilities					
0400 Due to Other Funds	585				
0411 Due to Other Governments					
0412 Due to Primary Government					
0413 Due to Component Unit					
0420 Accounts Payable	4,599,948				
0430 Contracts Payable					
0440 Current Portion of Long-Term Debt					
0450 Short-Term Payables					
0461 Accrued Salaries and Benefits					
0462 Payroll Deductions and Withholding	15,703,195				
0480 Unearned Revenues	144,102				
0490 Other Current Liabilities					
Total Liabilities	\$20,447,830				
0950 Deferred Inflows of Resources	2,024,777				
Fund Balances					
0810 Nonspendable Fund Balance	2,066,625				
0820 Restricted Fund Balance					
0830 Committed Fund Balance	6,276,909				
0840 Assigned Fund Balance	5,560,492				
0850 Unassigned Fund Balance	14,856,952				
Total Fund Balances	\$28,760,978				
Total Liabilities, Deferred Inflows Of Resources And Fund Balances	\$51,233,585				

Amounts Expressed in Whole Dollars

	<u>Capital Reserve (1431)</u> <u>(32)</u>	<u>Other Capital Projects</u> <u>Fund</u> <u>(39)</u>	<u>Debt Service</u> <u>(40)</u>	<u>Permanent</u> <u>(90)</u>	<u>Total Governmental</u> <u>Funds</u>
Liabilities And Deferred Inflows Of Resources And Fund Balances					
Liabilities					
0400 Due to Other Funds					585
0411 Due to Other Governments					
0412 Due to Primary Government					
0413 Due to Component Unit					
0420 Accounts Payable	142,050	1,756,925			6,498,923
0430 Contracts Payable					
0440 Current Portion of Long-Term Debt					
0450 Short-Term Payables					
0461 Accrued Salaries and Benefits					
0462 Payroll Deductions and Withholding					15,703,195
0480 Unearned Revenues					144,102
0490 Other Current Liabilities					
Total Liabilities	\$142,050	\$1,756,925			\$22,346,805
0950 Deferred Inflows of Resources					2,024,777
Fund Balances					
0810 Nonspendable Fund Balance	368,350				2,434,975
0820 Restricted Fund Balance	27,071,868	4,038,838			31,110,706
0830 Committed Fund Balance					6,276,909
0840 Assigned Fund Balance					5,560,492
0850 Unassigned Fund Balance					14,856,952
Total Fund Balances	\$27,440,218	\$4,038,838			\$60,240,034
Total Liabilities, Deferred Inflows Of Resources And Fund Balances	\$27,582,268	\$5,795,763			\$84,611,616

Amounts Expressed in Whole Dollars	<u>General Fund</u> <u>(10)</u>	<u>Public Purpose Trust</u> <u>(27)</u>	<u>Other Compt Approved</u> <u>(28)</u>	<u>Athletic / Activity</u> <u>(29)</u>	<u>Capital Reserve (690.</u> <u>1850)</u> <u>(31)</u>
Revenues					
6000 Revenue from Local Sources	183,321,292				
7000 Revenue from State Sources	35,806,499				
8000 Revenue from Federal Sources	1,665,595				
Total Revenues	\$220,793,386				
Expenditures					
1000 Instruction	130,495,364				
2000 Support Services	60,941,818				
3000 Operation of Non-Instructional Services	4,803,105				
4000 Facilities Acquisition, Construction and Improvement Services					
5110 Debt Service	18,350,433				
5130 Refund of Prior Year Revenues / Receipts					
5140 Short-Term Borrowing – Interest and Costs					
Total Expenditures	\$214,590,720				
Excess (Deficiency) Of Revenues Over Expenditures	\$6,202,666				
Other Financing Sources (Uses)					
9110 Face Value of Bonds Issued					
9120 Proceeds from Refunding of Bonds					
9130 Bond Premiums					
9200 Proceeds from Extended-Term Financing					
9300 Interfund Transfers - IN					
9400 Sale of or Compensation for Loss of Fixed Assets					
9710 Transfers from Component Units					
9720 Transfers from Primary Governments					
9910 Other Financing Sources Not Listed in the 9000 Series					
9990 Insurance Recoveries					
5120 Debt Service – Refunded Bonds					
5150 Bond Discounts					
5200 Interfund Transfers – Out	9,107,247				
5300 Transfers Out to Component Units/Primary Governments					
Total Other Financing Sources (Uses)	(\$9,107,247)				

Amounts Expressed in Whole Dollars	<u>Capital Reserve (1431)</u> <u>(32)</u>	<u>Other Capital Projects</u> <u>Fund</u> <u>(39)</u>	<u>Debt Service</u> <u>(40)</u>	<u>Permanent</u> <u>(90)</u>	<u>Total Governmental</u> <u>Funds</u>
Revenues					
6000 Revenue from Local Sources	87,550				183,408,842
7000 Revenue from State Sources					35,806,499
8000 Revenue from Federal Sources					1,665,595
Total Revenues	\$87,550				\$220,880,936
Expenditures					
1000 Instruction					130,495,364
2000 Support Services	2,787,517	116,980	347,273		64,193,588
3000 Operation of Non-Instructional Services					4,803,105
4000 Facilities Acquisition, Construction and Improvement Services	1,170,362	7,160,342			8,330,704
5110 Debt Service					18,350,433
5130 Refund of Prior Year Revenues / Receipts					
5140 Short-Term Borrowing – Interest and Costs					
Total Expenditures	\$3,957,879	\$7,277,322	\$347,273		\$226,173,194
Excess (Deficiency) Of Revenues Over Expenditures	(\$3,870,329)	(\$7,277,322)	(\$347,273)		(\$5,292,258)
Other Financing Sources (Uses)					
9110 Face Value of Bonds Issued		9,690,000			9,690,000
9120 Proceeds from Refunding of Bonds			52,210,000		52,210,000
9130 Bond Premiums		8,799	8,291,512		8,300,311
9200 Proceeds from Extended-Term Financing					
9300 Interfund Transfers - IN	9,107,247	18,537			9,125,784
9400 Sale of or Compensation for Loss of Fixed Assets		5,050,000			5,050,000
9710 Transfers from Component Units					
9720 Transfers from Primary Governments					
9910 Other Financing Sources Not Listed in the 9000 Series					
9990 Insurance Recoveries					
5120 Debt Service – Refunded Bonds			60,135,702		60,135,702
5150 Bond Discounts					
5200 Interfund Transfers – Out			18,537		9,125,784
5300 Transfers Out to Component Units/Primary Governments					
Total Other Financing Sources (Uses)	\$9,107,247	\$14,767,336	\$347,273		\$15,114,609

Amounts Expressed in Whole Dollars	<u>General Fund</u> <u>(10)</u>	<u>Public Purpose Trust</u> <u>(27)</u>	<u>Other Compt Approved</u> <u>(28)</u>	<u>Athletic / Activity</u> <u>(29)</u>	<u>Capital Reserve</u> <u>(690.</u> <u>1850)</u> <u>(31)</u>
Special And Extraordinary Items					
9920 Special Items – Gains					
9930 Extraordinary Items – Gains					
5520 Special Items – Losses					
5530 Extraordinary Items – Losses					
Net Change In Fund Balances	(\$2,904,581)				
Fund Balance					
0001 Fund Balance - Beginning of Fiscal Year	31,665,559				
Fund Balance - End Of Year	\$28,760,978				

Amounts Expressed in Whole Dollars	<u>Capital Reserve (1431)</u> <u>(32)</u>	<u>Other Capital Projects</u> <u>Fund</u> <u>(39)</u>	<u>Debt Service</u> <u>(40)</u>	<u>Permanent</u> <u>(90)</u>	<u>Total Governmental</u> <u>Funds</u>
Special And Extraordinary Items					
9920 Special Items – Gains					
9930 Extraordinary Items – Gains					
5520 Special Items – Losses					
5530 Extraordinary Items – Losses					
Net Change In Fund Balances	\$5,236,918	\$7,490,014			\$9,822,351
Fund Balance					
0001 Fund Balance - Beginning of Fiscal Year	22,203,300	(3,451,176)			50,417,683
Fund Balance - End Of Year	\$27,440,218	\$4,038,838			\$60,240,034

Amounts Expressed in Whole Dollars	<u>Food Service</u> <u>(51)</u>	<u>Child Care</u> <u>Operations</u> <u>(52)</u>	<u>Other Enterprise</u> <u>(58)</u>	<u>TOTAL</u>	<u>Internal Service</u> <u>(60)</u>
Assets And Deferred Outflows Of Resources					
Current Assets					
0100 Cash and Cash Equivalents	52,310			52,310	
0110 Investments	1,197,402			1,197,402	
0130 Due From Other Funds	585			585	
0141 Due From Other Governments	24,477			24,477	
0142 State Revenue Receivable					
0143 Federal Revenue Receivable					
0146 Due from Primary Government					
0147 Due from Component Unit					
0150 Other Receivables	96,757			96,757	
0170 Inventories	27,633			27,633	
0180 Prepaid Expenses (Expenditures)					
0190 Other Current Assets					
Total Current Assets	\$1,399,164			\$1,399,164	
Noncurrent Assets					
0211 Land					
0212 Site Improvements (Net)					
0220 Buildings and Building Improvements (Net)					
0230 Machinery, Equipment and Furniture (Net)	402,386			402,386	
0250 Construction in Progress					
0260 Long Term Prepayments					
0290 Other Noncurrent Assets					
Total Noncurrent Assets	\$402,386			\$402,386	
0910 Deferred Outflows of Resources					
Total Assets And Deferred Outflows Of Resources	\$1,801,550			\$1,801,550	

Amounts Expressed in Whole Dollars	<u>Food Service</u> <u>(51)</u>	<u>Child Care</u> <u>Operations</u> <u>(52)</u>	<u>Other Enterprise</u> <u>(58)</u>	<u>TOTAL</u>	<u>Internal Service</u> <u>(60)</u>
Liabilities And Deferred Inflows Of Resources And Net Position					
Current Liabilities					
0400 Due to Other Funds					
0411 Due to Other Governments					
0413 Due to Component Unit					
0420 Accounts Payable	182,849			182,849	
0430 Contracts Payable					
0440 Current Portion of Long-Term Debt					
0450 Short-Term Payables					
0461 Accrued Salaries and Benefits					
0462 Payroll Deductions and Withholding					
0480 Unearned Revenues	173,746			173,746	
0490 Other Current Liabilities					
Total Current Liabilities	\$356,595			\$356,595	
Noncurrent Liabilities					
0510 Bonds Payable					
0520 Extended-Term Financing Agreements Payable					
0530 Lease-Purchase Obligations					
0540 Accumulated Compensated Absences					
0550 Authority Lease Obligations					
0560 Other Post-Employment Benefits (OPEB)					
0570 Net Pension Liability					
0599 Other Noncurrent Liabilities					
Total Noncurrent Liabilities					
Total Liabilities	\$356,595			\$356,595	
0950 Deferred Inflows of Resources					
Net Position					
0791 Net Investment in Capital Assets	402,386			402,386	
0008 Restricted Net Position (0792 – 0798)					
0799 Unrestricted Net Position	1,042,569			1,042,569	
Total Net Position	\$1,444,955			\$1,444,955	
Total Liabilities And Deferred Inflows Of Resources And Net Position	\$1,801,550			\$1,801,550	

Amounts Expressed in Whole Dollars	<u>Food Service</u> <u>(51)</u>	<u>Child Care Operations</u> <u>(52)</u>	<u>Other Enterprise</u> <u>(58)</u>	<u>TOTAL</u>	<u>Internal Service</u> <u>(60)</u>
Operating Revenues					
6600 Food Service Revenue	2,293,122			2,293,122	
0071 Charges for Services					
0072 Other Operating Revenue					
Total Operating Revenues	\$2,293,122			\$2,293,122	
Operating Expenses					
100 Personnel Services – Salaries					
200 Personnel Services – Employee Benefits					
300 Purchased Professional and Technical Services					
400 Purchased Property Services					
500 Other Purchased Services	3,030,214			3,030,214	
600 Supplies	141,850			141,850	
740 Depreciation	56,040			56,040	
810 Dues and Fees					
890 Miscellaneous Expenditures	1,748			1,748	
Total Operating Expenses	\$3,229,852			\$3,229,852	
Operating Income (Loss)	(\$936,730)			(\$936,730)	
Non Operating Revenues (Expenses)					
6500 Earnings on Investments	2,738			2,738	
6920 Contributions and Donations from Private Sources					
6930 Gains or Losses on Sale of Fixed Assets					
6991 Refunds of a Prior Year Expenditure					
7000 Revenue from State Sources	69,269			69,269	
8000 Revenue from Federal Sources	901,501			901,501	
820 Claims and Judgments Against the LEA					
830 Interest					
TOTAL Non Operating Revenues (Expenses)	\$973,508			\$973,508	
Income (Loss) Before Contributions And Transfers	\$36,778			\$36,778	

Amounts Expressed in Whole Dollars	<u>Food Service</u> <u>(51)</u>	<u>Child Care Operations</u> <u>(52)</u>	<u>Other Enterprise</u> <u>(58)</u>	<u>TOTAL</u>	<u>Internal Service</u> <u>(60)</u>
Contributions, Transfers, and Special and Extraordinary Items					
5200 Interfund Transfers – Out					
5300 Transfers Out to Component Units/Primary Governments					
5520 Special Items – Losses					
5530 Extraordinary Items – Losses					
9300 Interfund Transfers - IN					
9500 Capital Contributions					
9700 Transfers IN From Component Units/Primary Governments					
9920 Special Items – Gains					
9930 Extraordinary Items – Gains					
Change In Net Position	\$36,778			\$36,778	
0002 Net Position - Beginning of Fiscal Year	1,408,177			1,408,177	
0003 Accounting Changes / Residual Equity Transfers					
Net Position - End Of Year	\$1,444,955			\$1,444,955	

Amounts Expressed in Whole Dollars	<u>Food Service</u> <u>(51)</u>	<u>Child Care Operations</u> <u>(52)</u>	<u>Other Enterprise</u> <u>(58)</u>	<u>TOTAL</u>	<u>Internal Service(60)</u>
Cash Flows From Operating Activities					
0011 Cash Receipts From Users	2,419,317			2,419,317	
0012 Cash Receipts From Assessments Made to Other Funds					
0013 Cash Receipts From Earnings on Investments					
0014 Cash Receipts From Other Operating Revenue					
0015 Cash Payments To Employees For Services					
0016 Cash Payments For Insurance Claims					
0017 Cash Payments To Suppliers For Goods and Services	3,081,003			3,081,003	
0018 Cash Payments For Other Operating Expenses					
Net Cash Provided By (Used For) Operating Activities	(\$661,686)			(\$661,686)	
Cash Flows From Non-Capital Financing Activities					
0021 Receipts From Local Sources - 6000					
0022 Receipts From State Sources - 7000	70,996			70,996	
0023 Receipts From Federal Sources -8000	766,716			766,716	
0024 Notes and Loans Received (Repaid)					
0025 Interest Paid on Notes/Loans - 5100-830					
0026 Operating Transfers In (Out)/Residual Equity Trans					
0027 Operating Transfers In (Out) Primary Government / Comp Unit					
0028 Receipts From Refund of Prior Year Expenditures - 6991					
0029 Special and Extraordinary Gains (losses)					
Net Cash Prov By (Used for) Non-Capital Financing Activities	\$837,712			\$837,712	
Cash Flows From Capital and Related Financing Activities					
0031 Payments For Fac Acq, Const, and Imp - 4000	(160,789)			(160,789)	
0032 Gain / (Loss) on Sale of Fixed Assets - 6930					
0033 Proceeds From Extended Term Financing - 9200					
0034 Principal Paid on Financing Agreements					
0035 Interest Paid on Financing Agreements - 5100-830					
0036 (Inc) Dec in Contributed Capital					
Net Cash Prov By (Used for) Capital and Related Financing Activities	(\$160,789)			(\$160,789)	
Cash Flows From Investing Activities					
0041 Earnings on Investments - 6500	2,738			2,738	
0042 Purchase of Inv Securities / Deposits to Inv Pools					
0043 Receipts From Investment Pool Withdrawals					
0044 Proceeds from Sale and Maturity of Inv Securities	(51,527)			(51,527)	
0045 Loans Received (Paid)					
Net Cash Prov By (Used for) Investing Activities	(\$48,789)			(\$48,789)	

	<u>Food Service</u> <u>(51)</u>	<u>Child Care Operations</u> <u>(52)</u>	<u>Other Enterprise</u> <u>(58)</u>	<u>TOTAL</u>	<u>Internal Service</u> <u>(60)</u>
Net Increase (Decrease) in Cash Flows	(33,552)			(33,552)	
0004 Cash and Cash Equivalents Beginning of Year	85,862			85,862	
Cash and Cash Equivalents at Year End	\$52,310			\$52,310	
<hr/>					
Reconciliation of Operating Income (Loss) To Net Cash Provided by (Used For) Operating Activities					
0005 Operating Income (Loss) per REP	(936,730)			(936,730)	
Adjustments					
0051 Depreciation and Net Amortization	56,040			56,040	
0052 Provision for Uncollectible Accounts					
0053 Other Adjustments	139,583			139,583	
Effect of Changes in Assets, Liabilities, Deferred Outflows and Deferred Inflows					
0054 (Inc) Dec In Accounts Receivable (0120-0150)	100,277			100,277	
0055 Advances to Other Funds (0160)					
0056 (Inc) Dec in Inventories (0170)					
0057 (Inc) Dec in Prepaid Expenses (0180)					
0058 (Inc) Dec in Other Current or Noncurrent Assets	(93)			(93)	
0064 Deferred Outflows (0910)					
0059 Inc (Dec) in Accounts Payable (0400-0450)	(46,774)			(46,774)	
0060 Inc (Dec) in Accrued Salaries/Benefits (0461)					
0065 Inc (Dec) in Net Pension Liabilities (0570)					
0066 Inc (Dec) in Other Postemp Benefit Oblig (0560)					
0061 Inc (Dec) in Payroll Deductions/Withholding (0462)					
0062 Inc (Dec) in Unearned Revenue (0480)	26,011			26,011	
0063 Inc (Dec) in Other Current or Noncurrent Liabilities					
0067 Deferred Inflows (0950)					
Total Adjustments	\$275,044			\$275,044	
Cash Provided By (Used for) Total	(\$661,686)			(\$661,686)	

COMBINED STATEMENT OF CASH FLOWS
SCHEDULE OF NONCASH INVESTING, CAPITAL, AND FINANCING ACTIVITIES

Explanation of Transaction and Balance Sheet Effect	Amount
Total	

LEA : 124159002 West Chester Area SD

Printed 12/19/2017 9:25:08 AM

Amounts Expressed in Whole Dollars

	<u>Private Purpose Trust</u> (71)	<u>Investment Trust</u> (72)	<u>Pension Trust</u> (73)	<u>Activity</u> (81)
Assets And Deferred Outflows Of Resources				
Assets				
0100 Cash and Cash Equivalents	410,690			432,065
0110 Investments				
0130 Due From Other Funds				
0147 Due from Component Unit				
0150 Other Receivables				
0170 Inventories				
0180 Prepaid Expenses (Expenditures)				
0190 Other Current Assets				
0220 Buildings and Building Improvements (Net)				
0230 Machinery, Equipment and Furniture (Net)				
Total Assets	\$410,690			\$432,065
0910 Deferred Outflows of Resources				
Total Assets And Deferred Outflows Of Resources	\$410,690			\$432,065

LEA : 124159002 West Chester Area SD

Printed 12/19/2017 9:25:08 AM

Amounts Expressed in Whole Dollars

	<u>Other Agency</u> <u>(89)</u>	<u>Discrete Component Units</u> <u>(98)</u>	<u>Discrete Component Units</u> <u>(99)</u>	<u>Total Fiduciary Funds</u>
Assets And Deferred Outflows Of Resources				
Assets				
0100 Cash and Cash Equivalents		60,164		902,919
0110 Investments				
0130 Due From Other Funds				
0147 Due from Component Unit				
0150 Other Receivables				
0170 Inventories				
0180 Prepaid Expenses (Expenditures)				
0190 Other Current Assets				
0220 Buildings and Building Improvements (Net)				
0230 Machinery, Equipment and Furniture (Net)				
Total Assets		\$60,164		\$902,919
0910 Deferred Outflows of Resources				
Total Assets And Deferred Outflows Of Resources		\$60,164		\$902,919

LEA : 124159002 West Chester Area SD

Printed 12/19/2017 9:25:08 AM

Amounts Expressed in Whole Dollars	<u>Private Purpose Trust</u> (71)	<u>Investment Trust</u> (72)	<u>Pension Trust</u> (73)	<u>Activity</u> (81)
Liabilities, Deferred Inflows Of Resources And Net Position				
Liabilities				
0400 Due to Other Funds				
0411 Due to Other Governments				
0412 Due to Primary Government				
0413 Due to Component Unit				
0420 Accounts Payable				
0430 Contracts Payable				
0450 Short-Term Payables				
0461 Accrued Salaries and Benefits				
0462 Payroll Deductions and Withholding				
0480 Unearned Revenues				
0490 Other Current Liabilities				432,065
Total Liabilities				\$432,065
0950 Deferred Inflows of Resources				
Net Position				
0791 Net Investment in Capital Assets				
0009 Restricted Net Position (0792 – 0798)	410,690			
0799 Unrestricted Net Position				
Total Net Position	\$410,690			
Total Liabilities, Deferred Inflows Of Resources And Net Position	\$410,690			\$432,065

Amounts Expressed in Whole Dollars	<u>Private Purpose Trust</u> <u>(71)</u>	<u>Investment Trust</u> <u>(72)</u>	<u>Pension Trust</u> <u>(73)</u>	<u>Discrete Component</u> <u>Units</u> <u>(98)</u>	<u>Discrete Component</u> <u>Units</u> <u>(99)</u>	<u>Total Fiduciary</u> <u>Funds</u>
Additions						
0091 Gifts and Contributions	647,151					647,151
0092 Other Additions						
Deductions						
0093 Scholarships Awarded						
0094 Other Deductions	733,376					733,376
Change In Net Position	(\$86,225)					(\$86,225)
0006 Net Position – Beginning of Fiscal Year	496,915					496,915
0007 Net Position Held in Trust for Pension Benefits						
Net Position - End of Fiscal Year	\$410,690					\$410,690

	<u>Revenue Reported In Current Year</u>	<u>Current Year Tax Accrual</u>	<u>Prior Year Tax Accrual</u>	<u>Taxes Collected In Current Year</u>
<u>Revenue from Local Sources</u>				
6111 Current Real Estate Taxes	151,929,043.22			151,929,043.22
6112 Interim Real Estate Taxes	780,929.63			780,929.63
6113 Public Utility Realty Taxes	198,340.43			198,340.43
6151 Current Act 511 Earned Income Taxes	20,118,547.19	749,588.65	781,808.48	20,150,767.02
6153 Current Act 511 Real Estate Transfer Taxes	4,207,419.54	362,492.80	305,587.66	4,150,514.40
6411 Delinquent Real Estate Taxes	2,982,801.92	478,294.53	336,900.48	2,841,407.87
6412 Delinquent Interim Real Estate Taxes	17,527.15			17,527.15
6500 Earnings on Investments	332,214.74			
6700 Revenues from LEA Activities	218,464.00			
6831 Federal Revenue Received from Other Pennsylvania Public LEAs	4,502.00			
6832 Federal IDEA Revenue Received as Pass Through	1,195,237.83			
6910 Rentals	402,308.18			
6920 Contributions and Donations from Private Sources	13,381.46			
6942 Summer School Tuition	34,562.55			
6944 Receipts from Other LEAs in Pennsylvania - Education	385,557.17			
6949 Other Tuition from Patrons	122,866.00			
6991 Refunds of a Prior Year Expenditure	36,858.58			
6999 Other Revenues Not Specified Above	340,730.76			
TOTAL Revenue from Local Sources	\$183,321,292.35	\$1,590,375.98	\$1,424,296.62	\$180,068,529.72

**Revenue Reported
In Current Year**

Revenue from State Sources

7110 Basic Education Funding	7,573,207.85		
7160 Tuition for Orphans Subsidy	179,409.11		
7271 Special Education funds for School-Aged Pupils	5,801,628.12		
7311 Pupil Transportation Subsidy	2,032,481.55		
7312 Nonpublic and Charter School Pupil Transportation Subsidy	1,639,330.00		
7330 Health Services (Medical, Dental, Nurse, Act 25)	253,941.05		
7340 State Property Tax Reduction Allocation	3,355,430.93		
7505 Ready to Learn Block Grant	399,095.00		
7810 State Share of Social Security and Medicare Taxes	3,194,004.15		
7820 State Share of Retirement Contributions	11,377,971.53		
TOTAL Revenue from State Sources	\$35,806,499.29		

**Revenue Reported
In Current Year**

Revenue from Federal Sources

8514 NCLB, Title I - Improving the Academic Achievement of the Disadvantaged	828,867.00			
8515 NCLB, Title II - Preparing, Training and Recruiting High Quality Teachers and Principals	373,948.93			
8516 NCLB, Title III - Language Instruction for Limited English Proficient and Immigrant Students	88,609.94			
8690 Other Restricted Federal Grants-in-Aid Through the Commonwealth of PA	68,631.71			
8810 School-Based Access Medicaid Reimbursement Program (SBAP) Reimbursements (Access)	280,350.00			
8820 Medical Assistance Reimbursement for Administrative Claiming (Quarterly) Program	25,187.44			
TOTAL Revenue from Federal Sources	\$1,665,595.02			
TOTAL FROM ALL SOURCES	\$220,793,386.66	\$1,590,375.98	\$1,424,296.62	\$180,068,529.72

Revenue from Local Sources	183,321,292.35
Revenue from State Sources	35,806,499.29
Revenue from Federal Sources	1,665,595.02
Other Financing Sources	
TOTAL FROM ALL SOURCES	\$220,793,386.66

General Fund (10)

	<u>Total</u>
1000 Instruction	
100 Personnel Services – Salaries	
100 Personnel Services – Salaries	60,950,789.72
Total Personnel Services – Salaries	\$60,950,789.72
200 Personnel Services – Employee Benefits	
210 Group Insurance – Contracted Provider	142,631.72
220 Social Security Contributions	4,457,050.68
230 PSERS Retirement Contributions	15,797,156.02
250 Unemployment Compensation	11,692.78
260 Workers’ Compensation	570,271.42
270 Group Insurance – Self-Insurance	15,394,641.90
290 Other Current Employee Benefits	439,213.77
Total Personnel Services – Employee Benefits	\$36,812,658.29
300 Purchased Professional and Technical Services	
322 Professional Educational Services – Ius	6,071,741.91
323 Professional Educational Services – Other Educational Agencies	736,865.23
324 Professional Educational Services – Employee Training and Development Services	697.00
329 Professional Educational Services – Other	7,579,158.52
340 Technical Services	168,866.88
Total Purchased Professional and Technical Services	\$14,557,329.54
400 Purchased Property Services	
430 Repairs and Maintenance Services	173,865.65
440 Rentals	262,860.31
Total Purchased Property Services	\$436,725.96
500 Other Purchased Services	
510 Student Transportation Services	60,717.83
530 Communications	130,597.39
549 Other Advertising/Public Relations	916.38
550 Printing and Binding	35,345.39
561 Tuition To Other School Districts Within the State	82,135.06
562 Tuition To Pennsylvania Charter Schools	9,455,097.54
563 Tuition To Nonpublic Schools	807,339.76
564 Tuition To Career and Technology Centers	2,597,177.00
567 Tuition To Approved Private Schools (APS) and PA Chartered Schools for the Deaf and Blind	975,992.84
568 Tuition To Private Residential Rehabilitative Institutions (PRRI) [In-State] and Detention Centers	44,146.27
569 Tuition – Other	562,777.61
580 Travel	51,894.37
Total Other Purchased Services	\$14,804,137.44
600 Supplies	
610 General Supplies	1,092,012.13
630 Food	9,034.70
640 Books and Periodicals	1,145,685.93
650 Supplies & Fees – Technology Related	287,949.54
Total Supplies	\$2,534,682.30

LEA : 124159002 West Chester Area SD

Printed 12/19/2017 9:25:10 AM

General Fund (10)

1000 Instruction	<u>Total</u>
700 <u>Property</u>	
750 Equipment – Original and Additional	167,789.06
760 Equipment – Replacement	125,710.85
Total Property	\$293,499.91
800 <u>Other Objects</u>	
810 Dues and Fees	105,541.24
Total Other Objects	\$105,541.24
Total 1000 Instruction	\$130,495,364.40

General Fund (10)

1100 Regular Programs – Elementary / Secondary

	<u>Elementary</u>	<u>Secondary</u>	<u>Federal</u>	<u>Total</u>
100 Personnel Services – Salaries				
100 Personnel Services – Salaries	23,347,059.64	23,411,943.20	534,826.85	47,293,829.69
Total Personnel Services – Salaries	\$23,347,059.64	\$23,411,943.20	\$534,826.85	\$47,293,829.69
200 Personnel Services – Employee Benefits				
210 Group Insurance – Contracted Provider	54,100.39	52,318.51	1,336.38	107,755.28
220 Social Security Contributions	1,709,685.15	1,721,636.12	39,302.57	3,470,623.84
230 PSERS Retirement Contributions	6,065,952.32	6,080,761.38	138,286.84	12,285,000.54
250 Unemployment Compensation	4,528.81	4,562.93		9,091.74
260 Workers' Compensation	220,876.85	222,538.22		443,415.07
270 Group Insurance – Self-Insurance	5,742,612.64	5,458,771.44	119,016.96	11,320,401.04
290 Other Current Employee Benefits	170,115.84	171,395.29		341,511.13
Total Personnel Services – Employee Benefits	\$13,967,872.00	\$13,711,983.89	\$297,942.75	\$27,977,798.64
300 Purchased Professional and Technical Services				
329 Professional Educational Services – Other	838,132.00	834,711.29	3,943.34	1,676,786.63
340 Technical Services	83,581.88	50,648.00		134,229.88
Total Purchased Professional and Technical Services	\$921,713.88	\$885,359.29	\$3,943.34	\$1,811,016.51
400 Purchased Property Services				
430 Repairs and Maintenance Services	89,201.53	84,664.12		173,865.65
440 Rentals	91,100.32	133,428.97		224,529.29
Total Purchased Property Services	\$180,301.85	\$218,093.09		\$398,394.94
500 Other Purchased Services				
510 Student Transportation Services	823.53	36,057.26	10,763.24	47,644.03
530 Communications	68,413.14	59,309.08	10.00	127,732.22
549 Other Advertising/Public Relations	471.94	444.44		916.38
550 Printing and Binding	19,565.65	15,030.91	147.90	34,744.46
562 Tuition To Pennsylvania Charter Schools	6,654,243.37			6,654,243.37
580 Travel	6,117.33	17,315.12	701.44	24,133.89
Total Other Purchased Services	\$6,749,634.96	\$128,156.81	\$11,622.58	\$6,889,414.35
600 Supplies				
610 General Supplies	442,068.80	437,906.45	4,945.16	884,920.41
630 Food	7,852.70	1,182.00		9,034.70
640 Books and Periodicals	232,349.48	906,430.23		1,138,779.71
650 Supplies & Fees – Technology Related	136,046.21	150,189.17		286,235.38
Total Supplies	\$818,317.19	\$1,495,707.85	\$4,945.16	\$2,318,970.20
700 Property				
750 Equipment – Original and Additional	42,414.07	79,005.15		121,419.22
760 Equipment – Replacement	8,696.58	42,634.30		51,330.88
Total Property	\$51,110.65	\$121,639.45		\$172,750.10
800 Other Objects				
810 Dues and Fees	2,037.27	85,173.37		87,210.64
Total Other Objects	\$2,037.27	\$85,173.37		\$87,210.64
Total 1100 Regular Programs – Elementary / Secondary	\$46,038,047.44	\$40,058,056.95	\$853,280.68	\$86,949,385.07

LEA : 124159002 West Chester Area SD

Printed 12/19/2017 9:25:10 AM

Page - 4 of 27

General Fund (10)**1110 Regular Programs**

	<u>Elementary</u>	<u>Secondary</u>	<u>Federal</u>	<u>Total</u>
100 Personnel Services – Salaries				
100 Personnel Services – Salaries	23,347,059.64	23,411,943.20	518.85	46,759,521.69
Total Personnel Services – Salaries	\$23,347,059.64	\$23,411,943.20	\$518.85	\$46,759,521.69
200 Personnel Services – Employee Benefits				
210 Group Insurance – Contracted Provider	54,100.39	52,318.51	0.47	106,419.37
220 Social Security Contributions	1,709,685.15	1,721,636.12	38.52	3,431,359.79
230 PSERS Retirement Contributions	6,065,952.32	6,080,761.38	134.09	12,146,847.79
250 Unemployment Compensation	4,528.81	4,562.93		9,091.74
260 Workers' Compensation	220,876.85	222,538.22		443,415.07
270 Group Insurance – Self-Insurance	5,742,612.64	5,458,771.44		11,201,384.08
290 Other Current Employee Benefits	170,115.84	171,395.29		341,511.13
Total Personnel Services – Employee Benefits	\$13,967,872.00	\$13,711,983.89	\$173.08	\$27,680,028.97
300 Purchased Professional and Technical Services				
329 Professional Educational Services – Other	838,132.00	834,711.29	3,477.08	1,676,320.37
340 Technical Services	83,581.88	50,648.00		134,229.88
Total Purchased Professional and Technical Services	\$921,713.88	\$885,359.29	\$3,477.08	\$1,810,550.25
400 Purchased Property Services				
430 Repairs and Maintenance Services	89,201.53	84,664.12		173,865.65
440 Rentals	91,100.32	133,428.97		224,529.29
Total Purchased Property Services	\$180,301.85	\$218,093.09		\$398,394.94
500 Other Purchased Services				
510 Student Transportation Services	823.53	36,057.26		36,880.79
530 Communications	68,413.14	59,309.08		127,722.22
549 Other Advertising/Public Relations	471.94	444.44		916.38
550 Printing and Binding	19,565.65	15,030.91	147.90	34,744.46
562 Tuition To Pennsylvania Charter Schools	6,654,243.37			6,654,243.37
580 Travel	6,117.33	17,315.12	701.44	24,133.89
Total Other Purchased Services	\$6,749,634.96	\$128,156.81	\$849.34	\$6,878,641.11
600 Supplies				
610 General Supplies	442,068.80	437,906.45	1,004.48	880,979.73
630 Food	7,852.70	1,182.00		9,034.70
640 Books and Periodicals	232,349.48	906,430.23		1,138,779.71
650 Supplies & Fees – Technology Related	136,046.21	150,189.17		286,235.38
Total Supplies	\$818,317.19	\$1,495,707.85	\$1,004.48	\$2,315,029.52
700 Property				
750 Equipment – Original and Additional	42,414.07	79,005.15		121,419.22
760 Equipment – Replacement	8,696.58	42,634.30		51,330.88
Total Property	\$51,110.65	\$121,639.45		\$172,750.10
800 Other Objects				
810 Dues and Fees	2,037.27	85,173.37		87,210.64
Total Other Objects	\$2,037.27	\$85,173.37		\$87,210.64
Total 1110 Regular Programs	\$46,038,047.44	\$40,058,056.95	\$6,022.83	\$86,102,127.22

General Fund (10)

	<u>Elementary</u>	<u>Secondary</u>	<u>Federal</u>	<u>Total</u>
1190 Federally-Funded Regular Programs				
100 Personnel Services – Salaries				
100 Personnel Services – Salaries			534,308.00	534,308.00
Total Personnel Services – Salaries			\$534,308.00	\$534,308.00
200 Personnel Services – Employee Benefits				
210 Group Insurance – Contracted Provider			1,335.91	1,335.91
220 Social Security Contributions			39,264.05	39,264.05
230 PSERS Retirement Contributions			138,152.75	138,152.75
270 Group Insurance – Self-Insurance			119,016.96	119,016.96
Total Personnel Services – Employee Benefits			\$297,769.67	\$297,769.67
300 Purchased Professional and Technical Services				
329 Professional Educational Services – Other			466.26	466.26
Total Purchased Professional and Technical Services			\$466.26	\$466.26
500 Other Purchased Services				
510 Student Transportation Services			10,763.24	10,763.24
530 Communications			10.00	10.00
Total Other Purchased Services			\$10,773.24	\$10,773.24
600 Supplies				
610 General Supplies			3,940.68	3,940.68
Total Supplies			\$3,940.68	\$3,940.68
Total 1190 Federally-Funded Regular Programs			\$847,257.85	\$847,257.85

General Fund (10)

1200 Special Programs – Elementary / Secondary

	<u>Elementary</u>	<u>Secondary</u>	<u>Federal</u>	<u>Total</u>
100 Personnel Services – Salaries				
100 Personnel Services – Salaries	6,155,656.59	5,479,794.58	42,426.42	11,677,877.59
Total Personnel Services – Salaries	\$6,155,656.59	\$5,479,794.58	\$42,426.42	\$11,677,877.59
200 Personnel Services – Employee Benefits				
210 Group Insurance – Contracted Provider	14,701.52	13,870.53	59.72	28,631.77
220 Social Security Contributions	440,296.34	398,324.23	3,091.14	841,711.71
230 PSERS Retirement Contributions	1,582,897.06	1,406,400.34	10,996.80	3,000,294.20
250 Unemployment Compensation	1,181.49	1,042.83		2,224.32
260 Workers' Compensation	57,622.77	50,859.79		108,482.56
270 Group Insurance – Self-Insurance	2,043,903.77	1,555,377.23	8,553.30	3,607,834.30
290 Other Current Employee Benefits	44,380.09	39,171.38		83,551.47
Total Personnel Services – Employee Benefits	\$4,184,983.04	\$3,465,046.33	\$22,700.96	\$7,672,730.33
300 Purchased Professional and Technical Services				
322 Professional Educational Services – Ius	1,414,202.37	3,348,639.41	1,193,717.00	5,956,558.78
323 Professional Educational Services – Other Educational Agencies		373,095.81		373,095.81
324 Professional Educational Services – Employee Training and Development Services			697.00	697.00
329 Professional Educational Services – Other	2,988,182.21	2,793,780.88	118,602.88	5,900,565.97
340 Technical Services	17,838.06	16,798.94		34,637.00
Total Purchased Professional and Technical Services	\$4,420,222.64	\$6,532,315.04	\$1,313,016.88	\$12,265,554.56
400 Purchased Property Services				
440 Rentals	1,360.42	1,281.18		2,641.60
Total Purchased Property Services	\$1,360.42	\$1,281.18		\$2,641.60
500 Other Purchased Services				
510 Student Transportation Services	4,093.65	4,877.89		8,971.54
530 Communications	1,475.56	1,389.61		2,865.17
550 Printing and Binding	309.48	291.45		600.93
561 Tuition To Other School Districts Within the State	1,505.00	69,489.85		70,994.85
562 Tuition To Pennsylvania Charter Schools	2,800,854.17			2,800,854.17
563 Tuition To Nonpublic Schools	126,150.00	648,932.76		775,082.76
567 Tuition To Approved Private Schools (APS) and PA Chartered Schools for the Deaf and Blind	502,636.31	473,356.53		975,992.84
568 Tuition To Private Residential Rehabilitative Institutions (PRRI) [In-State] and Detention Centers	22,735.33	21,410.94		44,146.27
569 Tuition – Other	286,393.10	269,710.01		556,103.11
580 Travel	5,375.03	6,120.91	2,418.27	13,914.21
Total Other Purchased Services	\$3,751,527.63	\$1,495,579.95	\$2,418.27	\$5,249,525.85
600 Supplies				
610 General Supplies	19,911.33	36,399.80	63,707.78	120,018.91
640 Books and Periodicals	631.66	3,988.50		4,620.16
650 Supplies & Fees – Technology Related	1,043.47	220.69		1,264.16
Total Supplies	\$21,586.46	\$40,608.99	\$63,707.78	\$125,903.23
700 Property				
750 Equipment – Original and Additional	2,360.43	1,800.80	16,230.15	20,391.38
760 Equipment – Replacement	28,325.00	26,675.00	14,920.32	69,920.32
Total Property	\$30,685.43	\$28,475.80	\$31,150.47	\$90,311.70

General Fund (10)

	<u>Elementary</u>	<u>Secondary</u>	<u>Federal</u>	<u>Total</u>
1200 Special Programs – Elementary / Secondary				
800 <u>Other Objects</u>				
810 Dues and Fees	1,305.11	4,701.89	9,838.60	15,845.60
Total Other Objects	\$1,305.11	\$4,701.89	\$9,838.60	\$15,845.60
Total 1200 Special Programs – Elementary / Secondary	\$18,567,327.32	\$17,047,803.76	\$1,485,259.38	\$37,100,390.46

General Fund (10)

1210 Life Skills Support

	<u>Elementary</u>	<u>Secondary</u>	<u>Federal</u>	<u>Total</u>
100 Personnel Services – Salaries				
100 Personnel Services – Salaries	290,844.68	193,265.10		484,109.78
Total Personnel Services – Salaries	\$290,844.68	\$193,265.10		\$484,109.78
200 Personnel Services – Employee Benefits				
210 Group Insurance – Contracted Provider	710.89	337.42		1,048.31
220 Social Security Contributions	19,232.11	13,460.27		32,692.38
230 PSERS Retirement Contributions	75,334.10	50,070.23		125,404.33
250 Unemployment Compensation	57.99	38.43		96.42
260 Workers' Compensation	2,828.28	1,874.57		4,702.85
270 Group Insurance – Self-Insurance	156,040.25	87,216.33		243,256.58
290 Other Current Employee Benefits	2,178.29	1,443.76		3,622.05
Total Personnel Services – Employee Benefits	\$256,381.91	\$154,441.01		\$410,822.92
300 Purchased Professional and Technical Services				
322 Professional Educational Services – lus		561,107.88	151,427.52	712,535.40
Total Purchased Professional and Technical Services		\$561,107.88	\$151,427.52	\$712,535.40
500 Other Purchased Services				
510 Student Transportation Services	1,284.54	1,230.06		2,514.60
Total Other Purchased Services	\$1,284.54	\$1,230.06		\$2,514.60
600 Supplies				
610 General Supplies			4,231.26	4,231.26
Total Supplies			\$4,231.26	\$4,231.26
Total 1210 Life Skills Support	\$548,511.13	\$910,044.05	\$155,658.78	\$1,614,213.96

General Fund (10)

1220 Sensory Support

	<u>Elementary</u>	<u>Secondary</u>	<u>Federal</u>	<u>Total</u>
100 Personnel Services – Salaries				
100 Personnel Services – Salaries	481,526.42	453,476.35		935,002.77
Total Personnel Services – Salaries	\$481,526.42	\$453,476.35		\$935,002.77
200 Personnel Services – Employee Benefits				
210 Group Insurance – Contracted Provider	1,145.02	1,078.32		2,223.34
220 Social Security Contributions	35,801.15	33,715.65		69,516.80
230 PSERS Retirement Contributions	121,339.01	114,270.72		235,609.73
250 Unemployment Compensation	95.14	89.60		184.74
260 Workers' Compensation	4,640.13	4,369.84		9,009.97
270 Group Insurance – Self-Insurance	95,146.79	89,604.25		184,751.04
290 Other Current Employee Benefits	3,573.75	3,365.58		6,939.33
Total Personnel Services – Employee Benefits	\$261,740.99	\$246,493.96		\$508,234.95
300 Purchased Professional and Technical Services				
322 Professional Educational Services – Ius	186,049.54	175,211.71	778,170.99	1,139,432.24
329 Professional Educational Services – Other	1,000.07	941.81		1,941.88
Total Purchased Professional and Technical Services	\$187,049.61	\$176,153.52	\$778,170.99	\$1,141,374.12
500 Other Purchased Services				
580 Travel	13.03	12.28		25.31
Total Other Purchased Services	\$13.03	\$12.28		\$25.31
600 Supplies				
610 General Supplies			3,956.78	3,956.78
Total Supplies			\$3,956.78	\$3,956.78
Total 1220 Sensory Support	\$930,330.05	\$876,136.11	\$782,127.77	\$2,588,593.93

General Fund (10)

1230 Emotional Support

	<u>Elementary</u>	<u>Secondary</u>	<u>Federal</u>	<u>Total</u>
100 Personnel Services – Salaries				
100 Personnel Services – Salaries	907,710.26	839,308.23		1,747,018.49
Total Personnel Services – Salaries	\$907,710.26	\$839,308.23		\$1,747,018.49
200 Personnel Services – Employee Benefits				
210 Group Insurance – Contracted Provider	1,613.90	1,761.32		3,375.22
220 Social Security Contributions	63,661.24	60,586.18		124,247.42
230 PSERS Retirement Contributions	235,005.26	217,242.21		452,247.47
250 Unemployment Compensation	180.99	166.98		347.97
260 Workers' Compensation	8,827.25	8,143.32		16,970.57
270 Group Insurance – Self-Insurance	386,044.09	266,691.62		652,735.71
290 Other Current Employee Benefits	6,798.58	6,271.85		13,070.43
Total Personnel Services – Employee Benefits	\$702,131.31	\$560,863.48		\$1,262,994.79
300 Purchased Professional and Technical Services				
322 Professional Educational Services – Ius		1,527,545.58	32,170.37	1,559,715.95
323 Professional Educational Services – Other Educational Agencies		363,769.40		363,769.40
329 Professional Educational Services – Other	1,272.05	1,197.95		2,470.00
Total Purchased Professional and Technical Services	\$1,272.05	\$1,892,512.93	\$32,170.37	\$1,925,955.35
500 Other Purchased Services				
510 Student Transportation Services	496.14	1,704.63		2,200.77
561 Tuition To Other School Districts Within the State	1,505.00	69,489.85		70,994.85
563 Tuition To Nonpublic Schools		16,303.00		16,303.00
Total Other Purchased Services	\$2,001.14	\$87,497.48		\$89,498.62
600 Supplies				
610 General Supplies		2,950.43	9,350.66	12,301.09
640 Books and Periodicals		406.29		406.29
Total Supplies		\$3,356.72	\$9,350.66	\$12,707.38
Total 1230 Emotional Support	\$1,613,114.76	\$3,383,538.84	\$41,521.03	\$5,038,174.63

General Fund (10)

1240 Academic Support

	<u>Elementary</u>	<u>Secondary</u>	<u>Federal</u>	<u>Total</u>
100 Personnel Services – Salaries				
100 Personnel Services – Salaries	3,571,488.90	3,167,371.05		6,738,859.95
Total Personnel Services – Salaries	\$3,571,488.90	\$3,167,371.05		\$6,738,859.95
200 Personnel Services – Employee Benefits				
210 Group Insurance – Contracted Provider	8,283.64	7,858.22		16,141.86
220 Social Security Contributions	255,423.78	229,972.49		485,396.27
230 PSERS Retirement Contributions	926,761.05	819,981.68		1,746,742.73
250 Unemployment Compensation	710.17	628.98		1,339.15
260 Workers' Compensation	34,635.46	30,676.58		65,312.04
270 Group Insurance – Self-Insurance	1,229,126.69	966,383.36		2,195,510.05
290 Other Current Employee Benefits	26,675.67	23,626.60		50,302.27
Total Personnel Services – Employee Benefits	\$2,481,616.46	\$2,079,127.91		\$4,560,744.37
300 Purchased Professional and Technical Services				
322 Professional Educational Services – lus		485,211.90	189,936.60	675,148.50
323 Professional Educational Services – Other Educational Agencies		9,326.41		9,326.41
329 Professional Educational Services – Other	3,382.61	6,396.80		9,779.41
Total Purchased Professional and Technical Services	\$3,382.61	\$500,935.11	\$189,936.60	\$694,254.32
500 Other Purchased Services				
510 Student Transportation Services		867.29		867.29
530 Communications	17.83	16.79		34.62
563 Tuition To Nonpublic Schools	126,150.00	632,629.76		758,779.76
580 Travel	43.83	1,100.24		1,144.07
Total Other Purchased Services	\$126,211.66	\$634,614.08		\$760,825.74
600 Supplies				
610 General Supplies	8,059.94	22,288.38	30,181.87	60,530.19
640 Books and Periodicals	609.00	3,560.87		4,169.87
650 Supplies & Fees – Technology Related	809.12			809.12
Total Supplies	\$9,478.06	\$25,849.25	\$30,181.87	\$65,509.18
700 Property				
750 Equipment – Original and Additional	448.23			448.23
Total Property	\$448.23			\$448.23
800 Other Objects				
810 Dues and Fees	1,215.50	4,617.50		5,833.00
Total Other Objects	\$1,215.50	\$4,617.50		\$5,833.00
Total 1240 Academic Support	\$6,193,841.42	\$6,412,514.90	\$220,118.47	\$12,826,474.79

General Fund (10)

1241 Learning Support – Public

	<u>Elementary</u>	<u>Secondary</u>	<u>Federal</u>	<u>Total</u>
100 Personnel Services – Salaries				
100 Personnel Services – Salaries	2,853,055.61	2,616,367.85		5,469,423.46
Total Personnel Services – Salaries	\$2,853,055.61	\$2,616,367.85		\$5,469,423.46
200 Personnel Services – Employee Benefits				
210 Group Insurance – Contracted Provider	6,672.29	5,819.60		12,491.89
220 Social Security Contributions	202,147.83	189,009.87		391,157.70
230 PSERS Retirement Contributions	740,957.98	677,495.45		1,418,453.43
250 Unemployment Compensation	568.69	520.80		1,089.49
260 Workers' Compensation	27,735.14	25,400.41		53,135.55
270 Group Insurance – Self-Insurance	1,063,154.62	845,294.31		1,908,448.93
290 Other Current Employee Benefits	21,361.15	19,562.98		40,924.13
Total Personnel Services – Employee Benefits	\$2,062,597.70	\$1,763,103.42		\$3,825,701.12
300 Purchased Professional and Technical Services				
322 Professional Educational Services – Ius		485,211.90	189,936.60	675,148.50
323 Professional Educational Services – Other Educational Agencies		9,326.41		9,326.41
329 Professional Educational Services – Other	787.50	3,952.86		4,740.36
Total Purchased Professional and Technical Services	\$787.50	\$498,491.17	\$189,936.60	\$689,215.27
500 Other Purchased Services				
510 Student Transportation Services		252.18		252.18
563 Tuition To Nonpublic Schools	126,150.00	632,629.76		758,779.76
Total Other Purchased Services	\$126,150.00	\$632,881.94		\$759,031.94
600 Supplies				
610 General Supplies	2,033.24	13,487.14	30,181.87	45,702.25
640 Books and Periodicals		3,100.78		3,100.78
650 Supplies & Fees – Technology Related	809.12			809.12
Total Supplies	\$2,842.36	\$16,587.92	\$30,181.87	\$49,612.15
700 Property				
750 Equipment – Original and Additional	448.23			448.23
Total Property	\$448.23			\$448.23
800 Other Objects				
810 Dues and Fees	1,130.00	2,250.00		3,380.00
Total Other Objects	\$1,130.00	\$2,250.00		\$3,380.00
Total 1241 Learning Support – Public	\$5,047,011.40	\$5,529,682.30	\$220,118.47	\$10,796,812.17

General Fund (10)

1243 Gifted Support

	<u>Elementary</u>	<u>Secondary</u>	<u>Federal</u>	<u>Total</u>
100 Personnel Services – Salaries				
100 Personnel Services – Salaries	718,433.29	551,003.20		1,269,436.49
Total Personnel Services – Salaries	\$718,433.29	\$551,003.20		\$1,269,436.49
200 Personnel Services – Employee Benefits				
210 Group Insurance – Contracted Provider	1,611.35	2,038.62		3,649.97
220 Social Security Contributions	53,275.95	40,962.62		94,238.57
230 PSERS Retirement Contributions	185,803.07	142,486.23		328,289.30
250 Unemployment Compensation	141.48	108.18		249.66
260 Workers' Compensation	6,900.32	5,276.17		12,176.49
270 Group Insurance – Self-Insurance	165,972.07	121,089.05		287,061.12
290 Other Current Employee Benefits	5,314.52	4,063.62		9,378.14
Total Personnel Services – Employee Benefits	\$419,018.76	\$316,024.49		\$735,043.25
300 Purchased Professional and Technical Services				
329 Professional Educational Services – Other	2,595.11	2,443.94		5,039.05
Total Purchased Professional and Technical Services	\$2,595.11	\$2,443.94		\$5,039.05
500 Other Purchased Services				
510 Student Transportation Services		615.11		615.11
530 Communications	17.83	16.79		34.62
580 Travel	43.83	1,100.24		1,144.07
Total Other Purchased Services	\$61.66	\$1,732.14		\$1,793.80
600 Supplies				
610 General Supplies	6,026.70	8,801.24		14,827.94
640 Books and Periodicals	609.00	460.09		1,069.09
Total Supplies	\$6,635.70	\$9,261.33		\$15,897.03
800 Other Objects				
810 Dues and Fees	85.50	2,367.50		2,453.00
Total Other Objects	\$85.50	\$2,367.50		\$2,453.00
Total 1243 Gifted Support	\$1,146,830.02	\$882,832.60		\$2,029,662.62

General Fund (10)

1260 Physical Support

300 Purchased Professional and Technical Services

322 Professional Educational Services – Ius

329 Professional Educational Services – Other

Total Purchased Professional and Technical Services

600 Supplies

610 General Supplies

Total Supplies

700 Property

750 Equipment – Original and Additional

Total Property

Total 1260 Physical Support

Elementary

Secondary

Federal

Total

93,123.08

87,698.43

180,821.51

452,760.77

426,386.35

879,147.12

\$545,883.85

\$514,084.78

\$1,059,968.63

1,498.84

1,411.52

2,910.36

\$1,498.84

\$1,411.52

\$2,910.36

1,912.20

1,800.80

3,713.00

\$1,912.20

\$1,800.80

\$3,713.00

\$549,294.89

\$517,297.10

\$1,066,591.99

General Fund (10)

1270 Multi-Handicapped Support

	<u>Elementary</u>	<u>Secondary</u>	<u>Federal</u>	<u>Total</u>
100 Personnel Services – Salaries				
100 Personnel Services – Salaries	150,269.41			150,269.41
Total Personnel Services – Salaries	\$150,269.41			\$150,269.41
200 Personnel Services – Employee Benefits				
210 Group Insurance – Contracted Provider	257.38			257.38
220 Social Security Contributions	10,470.24			10,470.24
230 PSERS Retirement Contributions	38,927.02			38,927.02
250 Unemployment Compensation	29.90			29.90
260 Workers' Compensation	1,458.39			1,458.39
270 Group Insurance – Self-Insurance	73,281.98			73,281.98
290 Other Current Employee Benefits	1,123.23			1,123.23
Total Personnel Services – Employee Benefits	\$125,548.14			\$125,548.14
300 Purchased Professional and Technical Services				
322 Professional Educational Services – lus	101,765.04	240,283.76		342,048.80
Total Purchased Professional and Technical Services	\$101,765.04	\$240,283.76		\$342,048.80
500 Other Purchased Services				
510 Student Transportation Services	1,170.49			1,170.49
Total Other Purchased Services	\$1,170.49			\$1,170.49
600 Supplies				
610 General Supplies			2,883.87	2,883.87
Total Supplies			\$2,883.87	\$2,883.87
Total 1270 Multi-Handicapped Support	\$378,753.08	\$240,283.76	\$2,883.87	\$621,920.71

LEA : 124159002 West Chester Area SD

Printed 12/19/2017 9:25:10 AM

General Fund (10)

1280 Early Intervention Support

300 Purchased Professional and Technical Services

	<u>Elementary</u>	<u>Secondary</u>	<u>Federal</u>	<u>Total</u>
322 Professional Educational Services – Ius	336,334.90		4,502.00	340,836.90
329 Professional Educational Services – Other	25,000.00			25,000.00
Total Purchased Professional and Technical Services	\$361,334.90		\$4,502.00	\$365,836.90
Total 1280 Early Intervention Support	\$361,334.90		\$4,502.00	\$365,836.90

General Fund (10)

	<u>Elementary</u>	<u>Secondary</u>	<u>Federal</u>	<u>Total</u>
1290 Special Programs - Other Support				
100 Personnel Services – Salaries				
100 Personnel Services – Salaries	753,816.92	826,373.85	42,426.42	1,622,617.19
Total Personnel Services – Salaries	\$753,816.92	\$826,373.85	\$42,426.42	\$1,622,617.19
200 Personnel Services – Employee Benefits				
210 Group Insurance – Contracted Provider	2,690.69	2,835.25	59.72	5,585.66
220 Social Security Contributions	55,707.82	60,589.64	3,091.14	119,388.60
230 PSERS Retirement Contributions	185,530.62	204,835.50	10,996.80	401,362.92
250 Unemployment Compensation	107.30	118.84		226.14
260 Workers' Compensation	5,233.26	5,795.48		11,028.74
270 Group Insurance – Self-Insurance	104,263.97	145,481.67	8,553.30	258,298.94
290 Other Current Employee Benefits	4,030.57	4,463.59		8,494.16
Total Personnel Services – Employee Benefits	\$357,564.23	\$424,119.97	\$22,700.96	\$804,385.16
300 Purchased Professional and Technical Services				
322 Professional Educational Services – Ius	696,929.81	271,580.15	37,509.52	1,006,019.48
324 Professional Educational Services – Employee Training and Development Services			697.00	697.00
329 Professional Educational Services – Other	2,504,766.71	2,358,857.97	118,602.88	4,982,227.56
340 Technical Services	17,838.06	16,798.94		34,637.00
Total Purchased Professional and Technical Services	\$3,219,534.58	\$2,647,237.06	\$156,809.40	\$6,023,581.04
400 Purchased Property Services				
440 Rentals	1,360.42	1,281.18		2,641.60
Total Purchased Property Services	\$1,360.42	\$1,281.18		\$2,641.60
500 Other Purchased Services				
510 Student Transportation Services	1,142.48	1,075.91		2,218.39
530 Communications	1,457.73	1,372.82		2,830.55
550 Printing and Binding	309.48	291.45		600.93
562 Tuition To Pennsylvania Charter Schools	2,800,854.17			2,800,854.17
567 Tuition To Approved Private Schools (APS) and PA Chartered Schools for the Deaf and Blind	502,636.31	473,356.53		975,992.84
568 Tuition To Private Residential Rehabilitative Institutions (PRRI) [In-State] and Detention Centers	22,735.33	21,410.94		44,146.27
569 Tuition – Other	286,393.10	269,710.01		556,103.11
580 Travel	5,318.17	5,008.39	2,418.27	12,744.83
Total Other Purchased Services	\$3,620,846.77	\$772,226.05	\$2,418.27	\$4,395,491.09
600 Supplies				
610 General Supplies	10,352.55	9,749.47	13,103.34	33,205.36
640 Books and Periodicals	22.66	21.34		44.00
650 Supplies & Fees – Technology Related	234.35	220.69		455.04
Total Supplies	\$10,609.56	\$9,991.50	\$13,103.34	\$33,704.40
700 Property				
750 Equipment – Original and Additional			16,230.15	16,230.15
760 Equipment – Replacement	28,325.00	26,675.00	14,920.32	69,920.32
Total Property	\$28,325.00	\$26,675.00	\$31,150.47	\$86,150.47
800 Other Objects				

LEA : 124159002 West Chester Area SD

Printed 12/19/2017 9:25:10 AM

General Fund (10)

1290 Special Programs - Other Support

800 Other Objects

810 Dues and Fees

Total Other Objects

Total 1290 Special Programs - Other Support

	<u>Elementary</u>	<u>Secondary</u>	<u>Federal</u>	<u>Total</u>
810 Dues and Fees	89.61	84.39	9,838.60	10,012.60
Total Other Objects	\$89.61	\$84.39	\$9,838.60	\$10,012.60
Total 1290 Special Programs - Other Support	\$7,992,147.09	\$4,707,989.00	\$278,447.46	\$12,978,583.55

General Fund (10)

1300 Vocational Education

	<u>Elementary</u>	<u>Secondary</u>	<u>Federal</u>	<u>Total</u>
100 Personnel Services – Salaries				
100 Personnel Services – Salaries		1,888,041.37		1,888,041.37
Total Personnel Services – Salaries		\$1,888,041.37		\$1,888,041.37
200 Personnel Services – Employee Benefits				
210 Group Insurance – Contracted Provider		6,235.86		6,235.86
220 Social Security Contributions		137,778.03		137,778.03
230 PSERS Retirement Contributions		488,250.76		488,250.76
250 Unemployment Compensation		376.72		376.72
260 Workers' Compensation		18,373.79		18,373.79
270 Group Insurance – Self-Insurance		466,406.56		466,406.56
290 Other Current Employee Benefits		14,151.17		14,151.17
Total Personnel Services – Employee Benefits		\$1,131,572.89		\$1,131,572.89
300 Purchased Professional and Technical Services				
329 Professional Educational Services – Other		155.40		155.40
Total Purchased Professional and Technical Services		\$155.40		\$155.40
500 Other Purchased Services				
510 Student Transportation Services		4,102.26		4,102.26
564 Tuition To Career and Technology Centers		2,597,177.00		2,597,177.00
580 Travel		13,846.27		13,846.27
Total Other Purchased Services		\$2,615,125.53		\$2,615,125.53
600 Supplies				
610 General Supplies		84,966.25		84,966.25
640 Books and Periodicals		2,286.06		2,286.06
650 Supplies & Fees – Technology Related		450.00		450.00
Total Supplies		\$87,702.31		\$87,702.31
700 Property				
750 Equipment – Original and Additional		25,978.46		25,978.46
760 Equipment – Replacement		4,459.65		4,459.65
Total Property		\$30,438.11		\$30,438.11
800 Other Objects				
810 Dues and Fees		2,485.00		2,485.00
Total Other Objects		\$2,485.00		\$2,485.00
Total 1300 Vocational Education		\$5,755,520.61		\$5,755,520.61

General Fund (10)

	<u>Elementary</u>	<u>Secondary</u>	<u>Federal</u>	<u>Total</u>
1400 Other Instructional Programs – Elementary / Secondary				
100 Personnel Services – Salaries				
100 Personnel Services – Salaries	57,245.67	33,795.40		91,041.07
Total Personnel Services – Salaries	\$57,245.67	\$33,795.40		\$91,041.07
200 Personnel Services – Employee Benefits				
210 Group Insurance – Contracted Provider	0.67	8.14		8.81
220 Social Security Contributions	4,376.30	2,560.80		6,937.10
230 PSERS Retirement Contributions	14,833.44	8,777.08		23,610.52
Total Personnel Services – Employee Benefits	\$19,210.41	\$11,346.02		\$30,556.43
300 Purchased Professional and Technical Services				
322 Professional Educational Services – Ius	209.08	93,031.73		93,240.81
323 Professional Educational Services – Other Educational Agencies		363,769.42		363,769.42
329 Professional Educational Services – Other		1,650.52		1,650.52
Total Purchased Professional and Technical Services	\$209.08	\$458,451.67		\$458,660.75
400 Purchased Property Services				
440 Rentals		35,689.42		35,689.42
Total Purchased Property Services		\$35,689.42		\$35,689.42
500 Other Purchased Services				
561 Tuition To Other School Districts Within the State	4,891.17	6,249.04		11,140.21
563 Tuition To Nonpublic Schools		32,257.00		32,257.00
569 Tuition – Other		6,674.50		6,674.50
Total Other Purchased Services	\$4,891.17	\$45,180.54		\$50,071.71
600 Supplies				
610 General Supplies	1,921.63	184.93		2,106.56
Total Supplies	\$1,921.63	\$184.93		\$2,106.56
Total 1400 Other Instructional Programs – Elementary / Secondary	\$83,477.96	\$584,647.98		\$668,125.94

General Fund (10)

	<u>Elementary</u>	<u>Secondary</u>	<u>Federal</u>	<u>Total</u>
1420 Summer School				
100 Personnel Services – Salaries				
100 Personnel Services – Salaries	57,245.67	23,648.90		80,894.57
Total Personnel Services – Salaries	\$57,245.67	\$23,648.90		\$80,894.57
200 Personnel Services – Employee Benefits				
210 Group Insurance – Contracted Provider	0.67	2.03		2.70
220 Social Security Contributions	4,376.30	1,807.72		6,184.02
230 PSERS Retirement Contributions	14,833.44	6,198.10		21,031.54
Total Personnel Services – Employee Benefits	\$19,210.41	\$8,007.85		\$27,218.26
500 Other Purchased Services				
569 Tuition – Other		6,674.50		6,674.50
Total Other Purchased Services		\$6,674.50		\$6,674.50
600 Supplies				
610 General Supplies	1,921.63	48.00		1,969.63
Total Supplies	\$1,921.63	\$48.00		\$1,969.63
Total 1420 Summer School	\$78,377.71	\$38,379.25		\$116,756.96

General Fund (10)

1430 Homebound Instruction

100 Personnel Services – Salaries

	<u>Elementary</u>	<u>Secondary</u>	<u>Federal</u>	<u>Total</u>
100 Personnel Services – Salaries		10,146.50		10,146.50
Total Personnel Services – Salaries		\$10,146.50		\$10,146.50

200 Personnel Services – Employee Benefits

210 Group Insurance – Contracted Provider		6.11		6.11
220 Social Security Contributions		753.08		753.08
230 PSERS Retirement Contributions		2,578.98		2,578.98
Total Personnel Services – Employee Benefits		\$3,338.17		\$3,338.17

300 Purchased Professional and Technical Services

329 Professional Educational Services – Other		1,650.52		1,650.52
Total Purchased Professional and Technical Services		\$1,650.52		\$1,650.52

500 Other Purchased Services

563 Tuition To Nonpublic Schools		13,657.00		13,657.00
Total Other Purchased Services		\$13,657.00		\$13,657.00

Total 1430 Homebound Instruction

Total 1430 Homebound Instruction		\$28,792.19		\$28,792.19
---	--	--------------------	--	--------------------

General Fund (10)

	<u>Elementary</u>	<u>Secondary</u>	<u>Federal</u>	<u>Total</u>
1440 Alternative Regular Education Programs				
300 <u>Purchased Professional and Technical Services</u>				
322 Professional Educational Services – Ius	209.08	82,045.95		82,255.03
323 Professional Educational Services – Other Educational Agencies		363,769.42		363,769.42
Total Purchased Professional and Technical Services	\$209.08	\$445,815.37		\$446,024.45
400 <u>Purchased Property Services</u>				
440 Rentals		35,689.42		35,689.42
Total Purchased Property Services		\$35,689.42		\$35,689.42
500 <u>Other Purchased Services</u>				
561 Tuition To Other School Districts Within the State	4,891.17	4,606.24		9,497.41
563 Tuition To Nonpublic Schools		18,600.00		18,600.00
Total Other Purchased Services	\$4,891.17	\$23,206.24		\$28,097.41
600 <u>Supplies</u>				
610 General Supplies		136.93		136.93
Total Supplies		\$136.93		\$136.93
Total 1440 Alternative Regular Education Programs	\$5,100.25	\$504,847.96		\$509,948.21

General Fund (10)

1441 Adjudicated / Court-Placed Programs

300 Purchased Professional and Technical Services

322 Professional Educational Services – lus

Total Purchased Professional and Technical Services

500 Other Purchased Services

561 Tuition To Other School Districts Within the State

Total Other Purchased Services

Total 1441 Adjudicated / Court-Placed Programs

Elementary

Secondary

Federal

Total

209.08

196.91

405.99

\$209.08

\$196.91

\$405.99

4,891.17

4,606.24

9,497.41

\$4,891.17

\$4,606.24

\$9,497.41

\$5,100.25

\$4,803.15

\$9,903.40

General Fund (10)

1442 Alternative Education Programs

300 Purchased Professional and Technical Services

	<u>Elementary</u>	<u>Secondary</u>	<u>Federal</u>	<u>Total</u>
322 Professional Educational Services – Ius		81,849.04		81,849.04
323 Professional Educational Services – Other Educational Agencies		363,769.42		363,769.42
Total Purchased Professional and Technical Services		\$445,618.46		\$445,618.46

400 Purchased Property Services

440 Rentals		35,689.42		35,689.42
Total Purchased Property Services		\$35,689.42		\$35,689.42

500 Other Purchased Services

563 Tuition To Nonpublic Schools		18,600.00		18,600.00
Total Other Purchased Services		\$18,600.00		\$18,600.00

600 Supplies

610 General Supplies		136.93		136.93
Total Supplies		\$136.93		\$136.93

Total 1442 Alternative Education Programs		\$500,044.81		\$500,044.81
--	--	---------------------	--	---------------------

General Fund (10)

1490 Additional Other Instructional Programs

Elementary

Secondary

Federal

Total

300 Purchased Professional and Technical Services

322 Professional Educational Services – lus

10,985.78

10,985.78

Total Purchased Professional and Technical Services

\$10,985.78

\$10,985.78

500 Other Purchased Services

561 Tuition To Other School Districts Within the State

1,642.80

1,642.80

Total Other Purchased Services

\$1,642.80

\$1,642.80

Total 1490 Additional Other Instructional Programs

\$12,628.58

\$12,628.58

General Fund (10)

1500 Nonpublic School Programs

300 Purchased Professional and Technical Services

322 Professional Educational Services – lus

Total Purchased Professional and Technical Services

Total 1500 Nonpublic School Programs

Elementary

Secondary

Federal

Total

21,942.32

21,942.32

\$21,942.32

\$21,942.32

\$21,942.32

\$21,942.32

General Fund (10)

2000 Support Services

Total

100 Personnel Services – Salaries

100 Personnel Services – Salaries 25,257,606.13

Total Personnel Services – Salaries \$25,257,606.13

200 Personnel Services – Employee Benefits

210 Group Insurance – Contracted Provider 78,191.56

220 Social Security Contributions 1,790,934.00

230 PSERS Retirement Contributions 6,385,871.64

240 Tuition Reimbursement 196,890.29

250 Unemployment Compensation 4,904.42

260 Workers' Compensation 239,190.76

270 Group Insurance – Self-Insurance 5,619,237.46

290 Other Current Employee Benefits 185,376.95

Total Personnel Services – Employee Benefits \$14,500,597.08

300 Purchased Professional and Technical Services

310 Official / Administrative Services 659,839.97

322 Professional Educational Services – Ius 55,943.04

324 Professional Educational Services – Employee Training and Development Services 16,324.92

329 Professional Educational Services – Other 539,477.69

330 Other Professional Services 373,498.46

340 Technical Services 296,402.69

350 Security / Safety Services 7,238.00

390 Other Purchased Professional and Technical Services 47,805.91

Total Purchased Professional and Technical Services \$1,996,530.68

400 Purchased Property Services

420 Utility Services 2,124,723.31

430 Repairs and Maintenance Services 729,626.39

440 Rentals 30,615.95

Total Purchased Property Services \$2,884,965.65

500 Other Purchased Services

513 Contracted Carriers 12,808,874.03

516 Student Transportation Services From the IU 16,335.19

520 Insurance – General 108,027.50

521 Fire Insurance 163,599.00

522 Automotive Liability Insurance 45,571.00

523 General Property and Liability Insurance 127,521.00

529 Other Insurance 9,513.49

530 Communications 356,312.28

549 Other Advertising/Public Relations 13,887.41

550 Printing and Binding 42,769.75

580 Travel 68,531.45

592 Services Purchased From Another LEA Within the State 22,236.34

595 IU Payments By Withholding 127,780.05

Total Other Purchased Services \$13,910,958.49

General Fund (10)

2000 Support Services

Total

600 <u>Supplies</u>	
610 General Supplies	906,115.68
620 Energy	620,241.27
630 Food	34,165.68
640 Books and Periodicals	99,321.32
650 Supplies & Fees – Technology Related	302,017.28
Total Supplies	\$1,961,861.23
700 <u>Property</u>	
750 Equipment – Original and Additional	46,339.40
760 Equipment – Replacement	201,496.50
Total Property	\$247,835.90
800 <u>Other Objects</u>	
810 Dues and Fees	181,462.52
Total Other Objects	\$181,462.52
Total 2000 Support Services	\$60,941,817.68

General Fund (10)

	<u>Elementary</u>	<u>Secondary</u>	<u>Federal</u>	<u>Total</u>
2100 Support Services – Students				
100 Personnel Services – Salaries				
100 Personnel Services – Salaries	1,981,424.14	2,636,658.78		5,216,034.87
Total Personnel Services – Salaries	\$1,981,424.14	\$2,636,658.78		\$5,216,034.87
200 Personnel Services – Employee Benefits				
210 Group Insurance – Contracted Provider	6,581.37	7,615.92		15,245.79
220 Social Security Contributions	144,433.27	191,357.32		378,134.89
230 PSERS Retirement Contributions	510,230.85	679,797.14		1,344,933.96
250 Unemployment Compensation	382.86	513.92		1,014.10
260 Workers' Compensation	18,672.93	25,064.60		49,458.88
270 Group Insurance – Self-Insurance	374,149.94	623,891.55		1,210,678.37
290 Other Current Employee Benefits	14,381.60	19,304.36		38,092.46
Total Personnel Services – Employee Benefits	\$1,068,832.82	\$1,547,544.81		\$3,037,558.45
300 Purchased Professional and Technical Services				
322 Professional Educational Services – Ius	28,810.67	27,132.37		55,943.04
329 Professional Educational Services – Other	99,664.48	93,858.78		195,507.87
Total Purchased Professional and Technical Services	\$128,475.15	\$120,991.15		\$251,450.91
500 Other Purchased Services				
530 Communications	2,095.25	1,973.20		7,287.14
549 Other Advertising/Public Relations	2,062.36	1,942.22		4,004.58
550 Printing and Binding	4,720.28	4,445.31		9,546.84
580 Travel	377.13	217.48	2,325.44	6,817.93
Total Other Purchased Services	\$9,255.02	\$8,578.21	\$2,325.44	\$27,656.49
600 Supplies				
610 General Supplies	43,650.89	51,618.80	885.23	97,769.41
640 Books and Periodicals	12.96	550.96		563.92
650 Supplies & Fees – Technology Related	808.55	761.45		1,570.00
Total Supplies	\$44,472.40	\$52,931.21	\$885.23	\$99,903.33
700 Property				
750 Equipment – Original and Additional		685.74		685.74
Total Property		\$685.74		\$685.74
800 Other Objects				
810 Dues and Fees	934.80	2,308.34	649.31	3,892.45
Total Other Objects	\$934.80	\$2,308.34	\$649.31	\$3,892.45
Total 2100 Support Services – Students	\$3,233,394.33	\$4,369,698.24	\$3,859.98	\$8,637,182.24

General Fund (10)

2110 Supervision of Student Services

	<u>Elementary</u>	<u>Secondary</u>	<u>Federal</u>	<u>Total</u>
100 Personnel Services – Salaries				
100 Personnel Services – Salaries	186,773.19	175,893.19		362,666.38
Total Personnel Services – Salaries	\$186,773.19	\$175,893.19		\$362,666.38
200 Personnel Services – Employee Benefits				
210 Group Insurance – Contracted Provider	1,873.56	1,764.42		3,637.98
220 Social Security Contributions	11,886.37	11,193.96		23,080.33
230 PSERS Retirement Contributions	46,725.45	44,003.58		90,729.03
250 Unemployment Compensation	37.21	35.05		72.26
260 Workers' Compensation	1,815.03	1,709.31		3,524.34
270 Group Insurance – Self-Insurance	39,955.51	37,628.02		77,583.53
290 Other Current Employee Benefits	1,397.91	1,316.48		2,714.39
Total Personnel Services – Employee Benefits	\$103,691.04	\$97,650.82		\$201,341.86
300 Purchased Professional and Technical Services				
329 Professional Educational Services – Other	4,293.32	4,043.23		8,336.55
Total Purchased Professional and Technical Services	\$4,293.32	\$4,043.23		\$8,336.55
500 Other Purchased Services				
530 Communications	2,095.25	1,973.20		4,068.45
549 Other Advertising/Public Relations	634.53	597.57		1,232.10
580 Travel	29.15	27.45	1,538.06	1,594.66
Total Other Purchased Services	\$2,758.93	\$2,598.22	\$1,538.06	\$6,895.21
800 Other Objects				
810 Dues and Fees	126.76	119.38		246.14
Total Other Objects	\$126.76	\$119.38		\$246.14
Total 2110 Supervision of Student Services	\$297,643.24	\$280,304.84	\$1,538.06	\$579,486.14

General Fund (10)

	<u>Elementary</u>	<u>Secondary</u>	<u>Federal</u>	<u>Total</u>
2111 Supervision of Student Services – Head of Component				
100 Personnel Services – Salaries				
100 Personnel Services – Salaries	118,785.67	111,866.12		230,651.79
Total Personnel Services – Salaries	\$118,785.67	\$111,866.12		\$230,651.79
200 Personnel Services – Employee Benefits				
210 Group Insurance – Contracted Provider	955.64	899.98		1,855.62
220 Social Security Contributions	6,876.61	6,476.03		13,352.64
230 PSERS Retirement Contributions	29,143.48	27,445.80		56,589.28
250 Unemployment Compensation	23.65	22.28		45.93
260 Workers' Compensation	1,153.63	1,086.43		2,240.06
270 Group Insurance – Self-Insurance	22,691.77	21,369.93		44,061.70
290 Other Current Employee Benefits	888.51	836.75		1,725.26
Total Personnel Services – Employee Benefits	\$61,733.29	\$58,137.20		\$119,870.49
500 Other Purchased Services				
530 Communications	216.30	203.70		420.00
Total Other Purchased Services	\$216.30	\$203.70		\$420.00
Total 2111 Supervision of Student Services – Head of Component	\$180,735.26	\$170,207.02		\$350,942.28

General Fund (10)

2119 Supervision of Student Services – All Other Supervision

	<u>Elementary</u>	<u>Secondary</u>	<u>Federal</u>	<u>Total</u>
100 Personnel Services – Salaries				
100 Personnel Services – Salaries	67,987.52	64,027.07		132,014.59
Total Personnel Services – Salaries	\$67,987.52	\$64,027.07		\$132,014.59
200 Personnel Services – Employee Benefits				
210 Group Insurance – Contracted Provider	917.92	864.44		1,782.36
220 Social Security Contributions	5,009.76	4,717.93		9,727.69
230 PSERS Retirement Contributions	17,581.97	16,557.78		34,139.75
250 Unemployment Compensation	13.56	12.77		26.33
260 Workers' Compensation	661.40	622.88		1,284.28
270 Group Insurance – Self-Insurance	17,263.74	16,258.09		33,521.83
290 Other Current Employee Benefits	509.40	479.73		989.13
Total Personnel Services – Employee Benefits	\$41,957.75	\$39,513.62		\$81,471.37
300 Purchased Professional and Technical Services				
329 Professional Educational Services – Other	4,293.32	4,043.23		8,336.55
Total Purchased Professional and Technical Services	\$4,293.32	\$4,043.23		\$8,336.55
500 Other Purchased Services				
530 Communications	1,878.95	1,769.50		3,648.45
549 Other Advertising/Public Relations	634.53	597.57		1,232.10
580 Travel	29.15	27.45	1,538.06	1,594.66
Total Other Purchased Services	\$2,542.63	\$2,394.52	\$1,538.06	\$6,475.21
800 Other Objects				
810 Dues and Fees	126.76	119.38		246.14
Total Other Objects	\$126.76	\$119.38		\$246.14
Total 2119 Supervision of Student Services – All Other Supervision	\$116,907.98	\$110,097.82	\$1,538.06	\$228,543.86

General Fund (10)

	<u>Elementary</u>	<u>Secondary</u>	<u>Federal</u>	<u>Total</u>
2120 Guidance Services				
100 Personnel Services – Salaries				
100 Personnel Services – Salaries	1,065,106.60	2,010,282.65		3,075,389.25
Total Personnel Services – Salaries	\$1,065,106.60	\$2,010,282.65		\$3,075,389.25
200 Personnel Services – Employee Benefits				
210 Group Insurance – Contracted Provider	3,278.56	5,136.53		8,415.09
220 Social Security Contributions	78,013.55	146,674.16		224,687.71
230 PSERS Retirement Contributions	275,739.93	519,104.20		794,844.13
250 Unemployment Compensation	206.27	395.09		601.36
260 Workers' Compensation	10,059.82	19,268.99		29,328.81
270 Group Insurance – Self-Insurance	222,022.05	492,086.94		714,108.99
290 Other Current Employee Benefits	7,747.90	14,840.66		22,588.56
Total Personnel Services – Employee Benefits	\$597,068.08	\$1,197,506.57		\$1,794,574.65
300 Purchased Professional and Technical Services				
329 Professional Educational Services – Other	13,229.73	12,459.07		25,688.80
Total Purchased Professional and Technical Services	\$13,229.73	\$12,459.07		\$25,688.80
500 Other Purchased Services				
580 Travel	267.50	114.23	637.38	1,019.11
Total Other Purchased Services	\$267.50	\$114.23	\$637.38	\$1,019.11
600 Supplies				
610 General Supplies	16,056.52	25,631.87		41,688.39
640 Books and Periodicals	12.96	550.96		563.92
Total Supplies	\$16,069.48	\$26,182.83		\$42,252.31
700 Property				
750 Equipment – Original and Additional		685.74		685.74
Total Property		\$685.74		\$685.74
800 Other Objects				
810 Dues and Fees		1,428.00	649.31	2,077.31
Total Other Objects		\$1,428.00	\$649.31	\$2,077.31
Total 2120 Guidance Services	\$1,691,741.39	\$3,248,659.09	\$1,286.69	\$4,941,687.17

General Fund (10)

2130 Attendance Services

Elementary Secondary Federal Total

100 Personnel Services – Salaries

100 Personnel Services – Salaries 180,016.46

Total Personnel Services – Salaries \$180,016.46

200 Personnel Services – Employee Benefits

210 Group Insurance – Contracted Provider 223.00

220 Social Security Contributions 12,096.05

230 PSERS Retirement Contributions 46,824.88

250 Unemployment Compensation 33.98

260 Workers' Compensation 1,656.91

270 Group Insurance – Self-Insurance 87,613.38

290 Other Current Employee Benefits 1,276.13

Total Personnel Services – Employee Benefits \$149,724.33

Total 2130 Attendance Services \$329,740.79

General Fund (10)

	<u>Elementary</u>	<u>Secondary</u>	<u>Federal</u>	<u>Total</u>
2140 Psychological Services				
100 Personnel Services – Salaries				
100 Personnel Services – Salaries	729,544.35	381,750.30		1,111,294.65
Total Personnel Services – Salaries	\$729,544.35	\$381,750.30		\$1,111,294.65
200 Personnel Services – Employee Benefits				
210 Group Insurance – Contracted Provider	1,429.25	611.05		2,040.30
220 Social Security Contributions	54,533.35	28,516.94		83,050.29
230 PSERS Retirement Contributions	187,765.47	98,843.59		286,609.06
250 Unemployment Compensation	139.38	70.34		209.72
260 Workers' Compensation	6,798.08	3,430.83		10,228.91
270 Group Insurance – Self-Insurance	112,172.38	69,857.98		182,030.36
290 Other Current Employee Benefits	5,235.79	2,642.38		7,878.17
Total Personnel Services – Employee Benefits	\$368,073.70	\$203,973.11		\$572,046.81
300 Purchased Professional and Technical Services				
322 Professional Educational Services – Ius	28,810.67	27,132.37		55,943.04
329 Professional Educational Services – Other	82,141.43	77,356.48		159,497.91
Total Purchased Professional and Technical Services	\$110,952.10	\$104,488.85		\$215,440.95
500 Other Purchased Services				
580 Travel	80.48	75.80	25.00	181.28
Total Other Purchased Services	\$80.48	\$75.80	\$25.00	\$181.28
600 Supplies				
610 General Supplies	27,594.37	25,986.93	133.00	53,714.30
Total Supplies	\$27,594.37	\$25,986.93	\$133.00	\$53,714.30
800 Other Objects				
810 Dues and Fees	808.04	760.96		1,569.00
Total Other Objects	\$808.04	\$760.96		\$1,569.00
Total 2140 Psychological Services	\$1,237,053.04	\$717,035.95	\$158.00	\$1,954,246.99

General Fund (10)

	<u>Elementary</u>	<u>Secondary</u>	<u>Federal</u>	<u>Total</u>
2160 Social Work Services				
100 Personnel Services – Salaries				
100 Personnel Services – Salaries				417,935.49
Total Personnel Services – Salaries				\$417,935.49
200 Personnel Services – Employee Benefits				
210 Group Insurance – Contracted Provider				825.50
220 Social Security Contributions				30,248.25
230 PSERS Retirement Contributions				108,081.09
250 Unemployment Compensation				83.34
260 Workers' Compensation				4,064.44
270 Group Insurance – Self-Insurance				125,023.50
290 Other Current Employee Benefits				3,130.37
Total Personnel Services – Employee Benefits				\$271,456.49
300 Purchased Professional and Technical Services				
329 Professional Educational Services – Other				1,984.61
Total Purchased Professional and Technical Services				\$1,984.61
500 Other Purchased Services				
530 Communications				3,218.69
550 Printing and Binding				381.25
580 Travel			125.00	4,022.88
Total Other Purchased Services			\$125.00	\$7,622.82
600 Supplies				
610 General Supplies			752.23	2,366.72
Total Supplies			\$752.23	\$2,366.72
Total 2160 Social Work Services			\$877.23	\$701,366.13

General Fund (10)

2190 Other Student Services

100 Personnel Services – Salaries

	<u>Elementary</u>	<u>Secondary</u>	<u>Federal</u>	<u>Total</u>
100 Personnel Services – Salaries		68,732.64		68,732.64
Total Personnel Services – Salaries		\$68,732.64		\$68,732.64

200 Personnel Services – Employee Benefits

210 Group Insurance – Contracted Provider		103.92		103.92
220 Social Security Contributions		4,972.26		4,972.26
230 PSERS Retirement Contributions		17,845.77		17,845.77
250 Unemployment Compensation		13.44		13.44
260 Workers' Compensation		655.47		655.47
270 Group Insurance – Self-Insurance		24,318.61		24,318.61
290 Other Current Employee Benefits		504.84		504.84
Total Personnel Services – Employee Benefits		\$48,414.31		\$48,414.31

500 Other Purchased Services

549 Other Advertising/Public Relations	1,427.83	1,344.65		2,772.48
550 Printing and Binding	4,720.28	4,445.31		9,165.59
Total Other Purchased Services	\$6,148.11	\$5,789.96		\$11,938.07

600 Supplies

650 Supplies & Fees – Technology Related	808.55	761.45		1,570.00
Total Supplies	\$808.55	\$761.45		\$1,570.00
Total 2190 Other Student Services	\$6,956.66	\$123,698.36		\$130,655.02

General Fund (10)

2200 Support Services – Instructional Staff

	<u>Elementary</u>	<u>Secondary</u>	<u>Federal</u>	<u>Total</u>
100 Personnel Services – Salaries				
100 Personnel Services – Salaries	1,621,544.43	1,165,806.01	63,201.24	2,850,551.68
Total Personnel Services – Salaries	\$1,621,544.43	\$1,165,806.01	\$63,201.24	\$2,850,551.68
200 Personnel Services – Employee Benefits				
210 Group Insurance – Contracted Provider	7,926.46	6,486.71	56.49	14,469.66
220 Social Security Contributions	115,862.90	82,364.74	4,699.38	202,927.02
230 PSERS Retirement Contributions	413,330.09	295,788.30	16,567.73	725,686.12
240 Tuition Reimbursement	84,891.64	111,998.65		196,890.29
250 Unemployment Compensation	320.03	229.32		549.35
260 Workers' Compensation	15,608.02	11,183.82		26,791.84
270 Group Insurance – Self-Insurance	347,322.53	252,758.17	7.63	600,088.33
290 Other Current Employee Benefits	12,021.07	8,613.62		20,634.69
Total Personnel Services – Employee Benefits	\$997,282.74	\$769,423.33	\$21,331.23	\$1,788,037.30
300 Purchased Professional and Technical Services				
324 Professional Educational Services – Employee Training and Development Services			15,661.92	15,661.92
329 Professional Educational Services – Other	8,845.27	710.10	182,625.19	192,180.56
340 Technical Services		8,791.92		8,791.92
Total Purchased Professional and Technical Services	\$8,845.27	\$9,502.02	\$198,287.11	\$216,634.40
400 Purchased Property Services				
440 Rentals	2,275.64	2,143.08	1,200.00	5,618.72
Total Purchased Property Services	\$2,275.64	\$2,143.08	\$1,200.00	\$5,618.72
500 Other Purchased Services				
530 Communications	3,222.62	3,454.89		6,677.51
550 Printing and Binding	111.28	104.79	253.58	469.65
580 Travel	4,007.50	4,636.32	23,304.16	31,947.98
592 Services Purchased From Another LEA Within the State			22,236.34	22,236.34
Total Other Purchased Services	\$7,341.40	\$8,196.00	\$45,794.08	\$61,331.48
600 Supplies				
610 General Supplies	10,404.91	18,431.54	1,261.79	30,098.24
630 Food	2,530.15	2,382.75	4,053.42	8,966.32
640 Books and Periodicals	41,126.82	45,959.71	1,812.57	88,899.10
650 Supplies & Fees – Technology Related	39,666.13	59,268.67		98,934.80
Total Supplies	\$93,728.01	\$126,042.67	\$7,127.78	\$226,898.46
700 Property				
750 Equipment – Original and Additional	6,446.99	1,665.50		8,112.49
760 Equipment – Replacement		3,336.55		3,336.55
Total Property	\$6,446.99	\$5,002.05		\$11,449.04
800 Other Objects				
810 Dues and Fees	2,729.38	3,488.72	46,415.29	52,633.39
Total Other Objects	\$2,729.38	\$3,488.72	\$46,415.29	\$52,633.39
Total 2200 Support Services – Instructional Staff	\$2,740,193.86	\$2,089,603.88	\$383,356.73	\$5,213,154.47

General Fund (10)

2210 Supervision of Educational Media Services

	<u>Elementary</u>	<u>Secondary</u>	<u>Federal</u>	<u>Total</u>
400 <u>Purchased Property Services</u>				
440 Rentals	1,104.60	1,040.26		2,144.86
Total Purchased Property Services	\$1,104.60	\$1,040.26		\$2,144.86
500 <u>Other Purchased Services</u>				
530 Communications	1,152.98	1,085.81		2,238.79
580 Travel	477.05	449.26		926.31
Total Other Purchased Services	\$1,630.03	\$1,535.07		\$3,165.10
600 <u>Supplies</u>				
650 Supplies & Fees – Technology Related	1,377.67	1,297.40		2,675.07
Total Supplies	\$1,377.67	\$1,297.40		\$2,675.07
800 <u>Other Objects</u>				
810 Dues and Fees	290.46	273.54		564.00
Total Other Objects	\$290.46	\$273.54		\$564.00
Total 2210 Supervision of Educational Media Services	\$4,402.76	\$4,146.27		\$8,549.03

General Fund (10)

2219 Supervision of Educational Media Services – All Other Supervision

	<u>Elementary</u>	<u>Secondary</u>	<u>Federal</u>	<u>Total</u>
400 <u>Purchased Property Services</u>				
440 Rentals	1,104.60	1,040.26		2,144.86
Total Purchased Property Services	\$1,104.60	\$1,040.26		\$2,144.86
500 <u>Other Purchased Services</u>				
530 Communications	1,152.98	1,085.81		2,238.79
580 Travel	477.05	449.26		926.31
Total Other Purchased Services	\$1,630.03	\$1,535.07		\$3,165.10
600 <u>Supplies</u>				
650 Supplies & Fees – Technology Related	1,377.67	1,297.40		2,675.07
Total Supplies	\$1,377.67	\$1,297.40		\$2,675.07
800 <u>Other Objects</u>				
810 Dues and Fees	290.46	273.54		564.00
Total Other Objects	\$290.46	\$273.54		\$564.00
Total 2219 Supervision of Educational Media Services – All Other Supervision	\$4,402.76	\$4,146.27		\$8,549.03

General Fund (10)

2220 Technology Support Services

100 Personnel Services – Salaries

	<u>Elementary</u>	<u>Secondary</u>	<u>Federal</u>	<u>Total</u>
100 Personnel Services – Salaries		25,578.75		25,578.75
Total Personnel Services – Salaries		\$25,578.75		\$25,578.75

200 Personnel Services – Employee Benefits

210 Group Insurance – Contracted Provider		55.95		55.95
220 Social Security Contributions		1,776.60		1,776.60
230 PSERS Retirement Contributions		6,615.49		6,615.49
250 Unemployment Compensation		5.11		5.11
260 Workers' Compensation		248.94		248.94
270 Group Insurance – Self-Insurance		8,793.86		8,793.86
290 Other Current Employee Benefits		191.73		191.73
Total Personnel Services – Employee Benefits		\$17,687.68		\$17,687.68

600 Supplies

610 General Supplies	1,088.34	7,775.37		8,863.71
650 Supplies & Fees – Technology Related		301.31		301.31
Total Supplies	\$1,088.34	\$8,076.68		\$9,165.02

700 Property

750 Equipment – Original and Additional	5,506.70	779.99		6,286.69
760 Equipment – Replacement		3,336.55		3,336.55
Total Property	\$5,506.70	\$4,116.54		\$9,623.24

Total 2220 Technology Support Services

Total 2220 Technology Support Services	\$6,595.04	\$55,459.65		\$62,054.69
---	-------------------	--------------------	--	--------------------

General Fund (10)

2230 Educational Television Services

100 Personnel Services – Salaries

	<u>Elementary</u>	<u>Secondary</u>	<u>Federal</u>	<u>Total</u>
100 Personnel Services – Salaries		2,065.44		2,065.44

Total Personnel Services – Salaries

		\$2,065.44		\$2,065.44
--	--	-------------------	--	-------------------

200 Personnel Services – Employee Benefits

210 Group Insurance – Contracted Provider		3.43		3.43
220 Social Security Contributions		155.60		155.60
230 PSERS Retirement Contributions		534.15		534.15
250 Unemployment Compensation		0.41		0.41
260 Workers' Compensation		20.10		20.10
270 Group Insurance – Self-Insurance		329.84		329.84
290 Other Current Employee Benefits		15.48		15.48

Total Personnel Services – Employee Benefits

		\$1,059.01		\$1,059.01
--	--	-------------------	--	-------------------

Total 2230 Educational Television Services

		\$3,124.45		\$3,124.45
--	--	-------------------	--	-------------------

General Fund (10)

	<u>Elementary</u>	<u>Secondary</u>	<u>Federal</u>	<u>Total</u>
2250 School Library Services				
100 Personnel Services – Salaries				
100 Personnel Services – Salaries	945,678.33	501,666.58		1,447,344.91
Total Personnel Services – Salaries	\$945,678.33	\$501,666.58		\$1,447,344.91
200 Personnel Services – Employee Benefits				
210 Group Insurance – Contracted Provider	2,394.76	1,217.86		3,612.62
220 Social Security Contributions	68,785.78	36,097.76		104,883.54
230 PSERS Retirement Contributions	244,705.61	129,836.99		374,542.60
250 Unemployment Compensation	188.41	99.84		288.25
260 Workers' Compensation	9,188.52	4,869.24		14,057.76
270 Group Insurance – Self-Insurance	257,900.86	159,421.87		417,322.73
290 Other Current Employee Benefits	7,076.86	3,750.21		10,827.07
Total Personnel Services – Employee Benefits	\$590,240.80	\$335,293.77		\$925,534.57
300 Purchased Professional and Technical Services				
329 Professional Educational Services – Other	653.59	615.51		1,269.10
340 Technical Services		8,791.92		8,791.92
Total Purchased Professional and Technical Services	\$653.59	\$9,407.43		\$10,061.02
500 Other Purchased Services				
580 Travel	10.29	9.69		19.98
Total Other Purchased Services	\$10.29	\$9.69		\$19.98
600 Supplies				
610 General Supplies	5,762.92	7,041.28		12,804.20
630 Food	73.20	68.94		142.14
640 Books and Periodicals	40,011.78	41,800.80		81,812.58
650 Supplies & Fees – Technology Related	23,401.52	43,650.23		67,051.75
Total Supplies	\$69,249.42	\$92,561.25		\$161,810.67
700 Property				
750 Equipment – Original and Additional	940.29	885.51		1,825.80
Total Property	\$940.29	\$885.51		\$1,825.80
800 Other Objects				
810 Dues and Fees	357.93	711.07		1,069.00
Total Other Objects	\$357.93	\$711.07		\$1,069.00
Total 2250 School Library Services	\$1,607,130.65	\$940,535.30		\$2,547,665.95

General Fund (10)

	<u>Elementary</u>	<u>Secondary</u>	<u>Federal</u>	<u>Total</u>
2260 Instruction and Curriculum Development Services				
100 Personnel Services – Salaries				
100 Personnel Services – Salaries	611,217.94	575,612.99		1,186,830.93
Total Personnel Services – Salaries	\$611,217.94	\$575,612.99		\$1,186,830.93
200 Personnel Services – Employee Benefits				
210 Group Insurance – Contracted Provider	5,105.00	4,807.62		9,912.62
220 Social Security Contributions	42,101.79	39,649.28		81,751.07
230 PSERS Retirement Contributions	152,627.96	143,737.00		296,364.96
250 Unemployment Compensation	121.73	114.65		236.38
260 Workers' Compensation	5,937.36	5,591.49		11,528.85
270 Group Insurance – Self-Insurance	84,914.60	79,968.09		164,882.69
290 Other Current Employee Benefits	4,572.87	4,306.50		8,879.37
Total Personnel Services – Employee Benefits	\$295,381.31	\$278,174.63		\$573,555.94
300 Purchased Professional and Technical Services				
329 Professional Educational Services – Other	8,191.68	94.59		8,286.27
Total Purchased Professional and Technical Services	\$8,191.68	\$94.59		\$8,286.27
400 Purchased Property Services				
440 Rentals	1,171.04	1,102.82		2,273.86
Total Purchased Property Services	\$1,171.04	\$1,102.82		\$2,273.86
500 Other Purchased Services				
530 Communications	2,069.64	2,369.08		4,438.72
550 Printing and Binding	20.41	19.22		39.63
580 Travel	2,862.96	3,558.46		6,421.42
Total Other Purchased Services	\$4,953.01	\$5,946.76		\$10,899.77
600 Supplies				
610 General Supplies	3,553.65	3,614.89		7,168.54
630 Food	839.09	790.21		1,629.30
640 Books and Periodicals	903.89	3,960.06		4,863.95
650 Supplies & Fees – Technology Related	13,995.36	13,180.10		27,175.46
Total Supplies	\$19,291.99	\$21,545.26		\$40,837.25
800 Other Objects				
810 Dues and Fees	1,778.17	2,218.93		3,997.10
Total Other Objects	\$1,778.17	\$2,218.93		\$3,997.10
Total 2260 Instruction and Curriculum Development Services	\$941,985.14	\$884,695.98		\$1,826,681.12

General Fund (10)

2270 Instructional Staff Professional Development Services

	<u>Elementary</u>	<u>Secondary</u>	<u>Federal</u>	<u>Total</u>
100 Personnel Services – Salaries				
100 Personnel Services – Salaries	64,648.16	60,882.25	63,201.24	188,731.65
Total Personnel Services – Salaries	\$64,648.16	\$60,882.25	\$63,201.24	\$188,731.65
200 Personnel Services – Employee Benefits				
210 Group Insurance – Contracted Provider	426.70	401.85	56.49	885.04
220 Social Security Contributions	4,975.33	4,685.50	4,699.38	14,360.21
230 PSERS Retirement Contributions	15,996.52	15,064.67	16,567.73	47,628.92
240 Tuition Reimbursement	84,891.64	111,998.65		196,890.29
250 Unemployment Compensation	9.89	9.31		19.20
260 Workers' Compensation	482.14	454.05		936.19
270 Group Insurance – Self-Insurance	4,507.07	4,244.51	7.63	8,759.21
290 Other Current Employee Benefits	371.34	349.70		721.04
Total Personnel Services – Employee Benefits	\$111,660.63	\$137,208.24	\$21,331.23	\$270,200.10
300 Purchased Professional and Technical Services				
324 Professional Educational Services – Employee Training and Development Services			15,661.92	15,661.92
329 Professional Educational Services – Other			182,625.19	182,625.19
Total Purchased Professional and Technical Services			\$198,287.11	\$198,287.11
400 Purchased Property Services				
440 Rentals			1,200.00	1,200.00
Total Purchased Property Services			\$1,200.00	\$1,200.00
500 Other Purchased Services				
550 Printing and Binding	90.87	85.57	253.58	430.02
580 Travel	657.20	618.91	23,304.16	24,580.27
Total Other Purchased Services	\$748.07	\$704.48	\$23,557.74	\$25,010.29
600 Supplies				
610 General Supplies			1,261.79	1,261.79
630 Food	1,617.86	1,523.60	4,053.42	7,194.88
640 Books and Periodicals	211.15	198.85	1,812.57	2,222.57
650 Supplies & Fees – Technology Related	891.58	839.63		1,731.21
Total Supplies	\$2,720.59	\$2,562.08	\$7,127.78	\$12,410.45
800 Other Objects				
810 Dues and Fees	302.82	285.18	46,415.29	47,003.29
Total Other Objects	\$302.82	\$285.18	\$46,415.29	\$47,003.29
Total 2270 Instructional Staff Professional Development Services	\$180,080.27	\$201,642.23	\$361,120.39	\$742,842.89

LEA : 124159002 West Chester Area SD

Printed 12/19/2017 9:25:12 AM

General Fund (10)

2280 Nonpublic Support Services

500 Other Purchased Services

592 Services Purchased From Another LEA Within the State

Total Other Purchased Services

Total 2280 Nonpublic Support Services

Elementary

Secondary

Federal

Total

22,236.34

22,236.34

\$22,236.34

\$22,236.34

\$22,236.34

\$22,236.34

General Fund (10)

	<u>Elementary</u>	<u>Secondary</u>	<u>Federal</u>	<u>Total</u>
2300 Support Services – Administration				
100 Personnel Services – Salaries				
100 Personnel Services – Salaries	1,945,854.86	3,258,589.84		6,099,345.56
Total Personnel Services – Salaries	\$1,945,854.86	\$3,258,589.84		\$6,099,345.56
200 Personnel Services – Employee Benefits				
210 Group Insurance – Contracted Provider	15,662.86	22,745.81		17,304.48
220 Social Security Contributions	132,796.46	226,460.20		412,144.63
230 PSERS Retirement Contributions	474,883.86	813,370.05		1,499,533.68
250 Unemployment Compensation	386.20	646.77		1,209.84
260 Workers' Compensation	18,835.16	31,543.75		59,005.19
270 Group Insurance – Self-Insurance	394,982.43	594,577.31		1,130,549.26
290 Other Current Employee Benefits	14,506.55	24,294.49		45,444.87
Total Personnel Services – Employee Benefits	\$1,052,053.52	\$1,713,638.38		\$3,165,191.95
300 Purchased Professional and Technical Services				
310 Official / Administrative Services				659,839.97
329 Professional Educational Services – Other		6,084.35		10,204.65
330 Other Professional Services				216,514.00
340 Technical Services				4,303.39
390 Other Purchased Professional and Technical Services				12,914.15
Total Purchased Professional and Technical Services		\$6,084.35		\$903,776.16
400 Purchased Property Services				
430 Repairs and Maintenance Services		498.90		498.90
440 Rentals				4,700.58
Total Purchased Property Services		\$498.90		\$5,199.48
500 Other Purchased Services				
520 Insurance – General				108,027.50
530 Communications	5,794.92	31,254.66		55,995.97
549 Other Advertising/Public Relations		854.82		9,780.67
550 Printing and Binding	171.63	11,088.01		26,906.89
580 Travel		6,234.76		12,180.32
Total Other Purchased Services	\$5,966.55	\$49,432.25		\$212,891.35
600 Supplies				
610 General Supplies	4,036.01	65,859.01		84,497.60
630 Food	2,138.45	6,459.55		22,051.48
640 Books and Periodicals	354.50	3,645.71		8,131.52
650 Supplies & Fees – Technology Related	259.88	2,088.22		4,590.06
Total Supplies	\$6,788.84	\$78,052.49		\$119,270.66
700 Property				
750 Equipment – Original and Additional		8,977.75		9,176.75
760 Equipment – Replacement	2,070.00	3,918.01		8,391.91
Total Property	\$2,070.00	\$12,895.76		\$17,568.66
800 Other Objects				

General Fund (10)

2300 Support Services – Administration

800 Other Objects

810 Dues and Fees

Total Other Objects

Total 2300 Support Services – Administration

	<u>Elementary</u>	<u>Secondary</u>	<u>Federal</u>	<u>Total</u>
810 Dues and Fees	5,339.10	6,903.13		46,665.11
Total Other Objects	\$5,339.10	\$6,903.13		\$46,665.11
Total 2300 Support Services – Administration	\$3,018,072.87	\$5,126,095.10		\$10,569,908.93

General Fund (10)

2310 Board Services

	<u>Elementary</u>	<u>Secondary</u>	<u>Federal</u>	<u>Total</u>
100 Personnel Services – Salaries				
100 Personnel Services – Salaries				4,479.40
Total Personnel Services – Salaries				\$4,479.40
200 Personnel Services – Employee Benefits				
210 Group Insurance – Contracted Provider				0.12
220 Social Security Contributions				280.18
230 PSERS Retirement Contributions				982.84
270 Group Insurance – Self-Insurance				26.98
Total Personnel Services – Employee Benefits				\$1,290.12
300 Purchased Professional and Technical Services				
330 Other Professional Services				26,102.00
Total Purchased Professional and Technical Services				\$26,102.00
500 Other Purchased Services				
520 Insurance – General				83,659.50
530 Communications				0.47
549 Other Advertising/Public Relations				3,056.05
580 Travel				357.38
Total Other Purchased Services				\$87,073.40
600 Supplies				
610 General Supplies				3,088.20
630 Food				5,116.43
Total Supplies				\$8,204.63
800 Other Objects				
810 Dues and Fees				14,224.00
Total Other Objects				\$14,224.00
Total 2310 Board Services				\$141,373.55

General Fund (10)

	<u>Elementary</u>	<u>Secondary</u>	<u>Federal</u>	<u>Total</u>
2330 Tax Assessment and Collection Services				
200 Personnel Services – Employee Benefits				
220 Social Security Contributions				0.13
Total Personnel Services – Employee Benefits				\$0.13
300 Purchased Professional and Technical Services				
310 Official / Administrative Services				659,839.97
390 Other Purchased Professional and Technical Services				12,914.15
Total Purchased Professional and Technical Services				\$672,754.12
500 Other Purchased Services				
520 Insurance – General				24,368.00
530 Communications				14,952.60
Total Other Purchased Services				\$39,320.60
800 Other Objects				
810 Dues and Fees				8,379.63
Total Other Objects				\$8,379.63
Total 2330 Tax Assessment and Collection Services				\$720,454.48

General Fund (10)

2340 Staff Relations and Negotiations Services

Elementary

Secondary

Federal

Total

300 Purchased Professional and Technical Services

330 Other Professional Services

36.00

Total Purchased Professional and Technical Services

\$36.00

Total 2340 Staff Relations and Negotiations Services

\$36.00

General Fund (10)

2350 Legal and Accounting Services

Elementary

Secondary

Federal

Total

300 Purchased Professional and Technical Services

330 Other Professional Services

190,376.00

Total Purchased Professional and Technical Services

\$190,376.00

Total 2350 Legal and Accounting Services

\$190,376.00

General Fund (10)

2360 Office of the Superintendent / Executive Director Services

	<u>Elementary</u>	<u>Secondary</u>	<u>Federal</u>	<u>Total</u>
100 Personnel Services – Salaries				
100 Personnel Services – Salaries				764,982.73
Total Personnel Services – Salaries				\$764,982.73
200 Personnel Services – Employee Benefits				
210 Group Insurance – Contracted Provider				(21,268.92)
220 Social Security Contributions				43,365.38
230 PSERS Retirement Contributions				178,006.50
250 Unemployment Compensation				152.31
260 Workers' Compensation				7,428.31
270 Group Insurance – Self-Insurance				116,447.05
290 Other Current Employee Benefits				5,721.17
Total Personnel Services – Employee Benefits				\$329,851.80
300 Purchased Professional and Technical Services				
329 Professional Educational Services – Other				4,120.30
Total Purchased Professional and Technical Services				\$4,120.30
400 Purchased Property Services				
440 Rentals				4,700.58
Total Purchased Property Services				\$4,700.58
500 Other Purchased Services				
530 Communications	2,027.74	1,909.61		3,937.35
550 Printing and Binding				79.26
580 Travel				3,973.01
Total Other Purchased Services	\$2,027.74	\$1,909.61		\$7,989.62
600 Supplies				
610 General Supplies				4,280.82
630 Food				8,337.05
640 Books and Periodicals				2,732.77
Total Supplies				\$15,350.64
700 Property				
750 Equipment – Original and Additional				199.00
Total Property				\$199.00
800 Other Objects				
810 Dues and Fees				7,411.00
Total Other Objects				\$7,411.00
Total 2360 Office of the Superintendent / Executive Director Services	\$2,027.74	\$1,909.61		\$1,134,605.67

General Fund (10)

	<u>Elementary</u>	<u>Secondary</u>	<u>Federal</u>	<u>Total</u>
2370 Community Relations Services				
100 Personnel Services – Salaries				
100 Personnel Services – Salaries				125,438.73
Total Personnel Services – Salaries				\$125,438.73
200 Personnel Services – Employee Benefits				
210 Group Insurance – Contracted Provider				164.61
220 Social Security Contributions				9,242.28
230 PSERS Retirement Contributions				32,290.43
250 Unemployment Compensation				24.56
260 Workers' Compensation				1,197.97
270 Group Insurance – Self-Insurance				24,515.49
290 Other Current Employee Benefits				922.66
Total Personnel Services – Employee Benefits				\$68,358.00
300 Purchased Professional and Technical Services				
340 Technical Services				4,303.39
Total Purchased Professional and Technical Services				\$4,303.39
500 Other Purchased Services				
530 Communications				3,993.32
549 Other Advertising/Public Relations				5,869.80
550 Printing and Binding				15,567.99
580 Travel				1,615.17
Total Other Purchased Services				\$27,046.28
600 Supplies				
610 General Supplies				7,233.56
640 Books and Periodicals				1,398.54
650 Supplies & Fees – Technology Related				2,241.96
Total Supplies				\$10,874.06
700 Property				
760 Equipment – Replacement				2,403.90
Total Property				\$2,403.90
800 Other Objects				
810 Dues and Fees				4,408.25
Total Other Objects				\$4,408.25
Total 2370 Community Relations Services				\$242,832.61

General Fund (10)

2380 Office of the Principal Services

	<u>Elementary</u>	<u>Secondary</u>	<u>Federal</u>	<u>Total</u>
100 Personnel Services – Salaries				
100 Personnel Services – Salaries	1,945,854.86	3,258,589.84		5,204,444.70
Total Personnel Services – Salaries	\$1,945,854.86	\$3,258,589.84		\$5,204,444.70
200 Personnel Services – Employee Benefits				
210 Group Insurance – Contracted Provider	15,662.86	22,745.81		38,408.67
220 Social Security Contributions	132,796.46	226,460.20		359,256.66
230 PSERS Retirement Contributions	474,883.86	813,370.05		1,288,253.91
250 Unemployment Compensation	386.20	646.77		1,032.97
260 Workers' Compensation	18,835.16	31,543.75		50,378.91
270 Group Insurance – Self-Insurance	394,982.43	594,577.31		989,559.74
290 Other Current Employee Benefits	14,506.55	24,294.49		38,801.04
Total Personnel Services – Employee Benefits	\$1,052,053.52	\$1,713,638.38		\$2,765,691.90
300 Purchased Professional and Technical Services				
329 Professional Educational Services – Other		6,084.35		6,084.35
Total Purchased Professional and Technical Services		\$6,084.35		\$6,084.35
400 Purchased Property Services				
430 Repairs and Maintenance Services		498.90		498.90
Total Purchased Property Services		\$498.90		\$498.90
500 Other Purchased Services				
530 Communications	3,767.18	29,345.05		33,112.23
549 Other Advertising/Public Relations		854.82		854.82
550 Printing and Binding	171.63	11,088.01		11,259.64
580 Travel		6,234.76		6,234.76
Total Other Purchased Services	\$3,938.81	\$47,522.64		\$51,461.45
600 Supplies				
610 General Supplies	4,036.01	65,859.01		69,895.02
630 Food	2,138.45	6,459.55		8,598.00
640 Books and Periodicals	354.50	3,645.71		4,000.21
650 Supplies & Fees – Technology Related	259.88	2,088.22		2,348.10
Total Supplies	\$6,788.84	\$78,052.49		\$84,841.33
700 Property				
750 Equipment – Original and Additional		8,977.75		8,977.75
760 Equipment – Replacement	2,070.00	3,918.01		5,988.01
Total Property	\$2,070.00	\$12,895.76		\$14,965.76
800 Other Objects				
810 Dues and Fees	5,339.10	6,903.13		12,242.23
Total Other Objects	\$5,339.10	\$6,903.13		\$12,242.23
Total 2380 Office of the Principal Services	\$3,016,045.13	\$5,124,185.49		\$8,140,230.62

General Fund (10)

	<u>Elementary</u>	<u>Secondary</u>	<u>Federal</u>	<u>Total</u>
2400 Support Services – Pupil Health				
100 Personnel Services – Salaries				
100 Personnel Services – Salaries				1,250,641.56
Total Personnel Services – Salaries				\$1,250,641.56
200 Personnel Services – Employee Benefits				
210 Group Insurance – Contracted Provider				3,006.24
220 Social Security Contributions				88,933.00
230 PSERS Retirement Contributions				321,532.43
250 Unemployment Compensation				247.91
260 Workers' Compensation				12,088.98
270 Group Insurance – Self-Insurance				445,728.42
290 Other Current Employee Benefits				9,310.71
Total Personnel Services – Employee Benefits				\$880,847.69
300 Purchased Professional and Technical Services				
329 Professional Educational Services – Other				4,154.00
Total Purchased Professional and Technical Services				\$4,154.00
400 Purchased Property Services				
430 Repairs and Maintenance Services				511.15
Total Purchased Property Services				\$511.15
500 Other Purchased Services				
530 Communications				433.89
580 Travel				565.74
Total Other Purchased Services				\$999.63
600 Supplies				
610 General Supplies			135.08	28,038.37
640 Books and Periodicals				100.00
Total Supplies			\$135.08	\$28,138.37
800 Other Objects				
810 Dues and Fees				230.00
Total Other Objects				\$230.00
Total 2400 Support Services – Pupil Health			\$135.08	\$2,165,522.40

General Fund (10)

2420 Medical Services

Elementary

Secondary

Federal

Total

300 Purchased Professional and Technical Services

329 Professional Educational Services – Other

1,575.00

Total Purchased Professional and Technical Services

\$1,575.00

Total 2420 Medical Services

\$1,575.00

General Fund (10)

2430 Dental Services

Elementary

Secondary

Federal

Total

300 Purchased Professional and Technical Services

329 Professional Educational Services – Other

820.00

Total Purchased Professional and Technical Services

\$820.00

Total 2430 Dental Services

\$820.00

General Fund (10)

2440 Nursing Services

	<u>Elementary</u>	<u>Secondary</u>	<u>Federal</u>	<u>Total</u>
100 Personnel Services – Salaries				
100 Personnel Services – Salaries				1,090,801.98
Total Personnel Services – Salaries				\$1,090,801.98
200 Personnel Services – Employee Benefits				
210 Group Insurance – Contracted Provider				2,601.57
220 Social Security Contributions				77,701.81
230 PSERS Retirement Contributions				282,091.28
250 Unemployment Compensation				216.01
260 Workers' Compensation				10,533.36
270 Group Insurance – Self-Insurance				382,301.02
290 Other Current Employee Benefits				8,112.60
Total Personnel Services – Employee Benefits				\$763,557.65
300 Purchased Professional and Technical Services				
329 Professional Educational Services – Other				1,759.00
Total Purchased Professional and Technical Services				\$1,759.00
400 Purchased Property Services				
430 Repairs and Maintenance Services				511.15
Total Purchased Property Services				\$511.15
500 Other Purchased Services				
530 Communications				433.89
580 Travel				565.74
Total Other Purchased Services				\$999.63
600 Supplies				
610 General Supplies			135.08	28,038.37
640 Books and Periodicals				100.00
Total Supplies			\$135.08	\$28,138.37
800 Other Objects				
810 Dues and Fees				230.00
Total Other Objects				\$230.00
Total 2440 Nursing Services			\$135.08	\$1,885,997.78

General Fund (10)

	<u>Elementary</u>	<u>Secondary</u>	<u>Federal</u>	<u>Total</u>
2450 Nonpublic Health Services				
100 Personnel Services – Salaries				
100 Personnel Services – Salaries				159,839.58
Total Personnel Services – Salaries				\$159,839.58
200 Personnel Services – Employee Benefits				
210 Group Insurance – Contracted Provider				404.67
220 Social Security Contributions				11,231.19
230 PSERS Retirement Contributions				39,441.15
250 Unemployment Compensation				31.90
260 Workers' Compensation				1,555.62
270 Group Insurance – Self-Insurance				63,427.40
290 Other Current Employee Benefits				1,198.11
Total Personnel Services – Employee Benefits				\$117,290.04
Total 2450 Nonpublic Health Services				\$277,129.62

General Fund (10)

2500 Support Services – Business

Elementary Secondary Federal Total

100 Personnel Services – Salaries

100 Personnel Services – Salaries 1,076,662.52

Total Personnel Services – Salaries \$1,076,662.52

200 Personnel Services – Employee Benefits

210 Group Insurance – Contracted Provider 3,954.54

220 Social Security Contributions 68,577.24

230 PSERS Retirement Contributions 267,749.51

250 Unemployment Compensation 214.73

260 Workers' Compensation 10,472.57

270 Group Insurance – Self-Insurance 280,564.68

290 Other Current Employee Benefits 8,065.81

Total Personnel Services – Employee Benefits \$639,599.08

300 Purchased Professional and Technical Services

324 Professional Educational Services – Employee Training and Development Services 663.00

330 Other Professional Services 9,550.00

Total Purchased Professional and Technical Services \$10,213.00

400 Purchased Property Services

430 Repairs and Maintenance Services 1,604.36

440 Rentals 5,170.81

Total Purchased Property Services \$6,775.17

500 Other Purchased Services

530 Communications 18,273.96

549 Other Advertising/Public Relations 102.16

550 Printing and Binding 1,398.33

580 Travel 1,941.49

Total Other Purchased Services \$21,715.94

600 Supplies

610 General Supplies 9,291.82

630 Food 160.00

640 Books and Periodicals 856.35

650 Supplies & Fees – Technology Related 56,488.25

Total Supplies \$66,796.42

700 Property

760 Equipment – Replacement 2,101.00

Total Property \$2,101.00

800 Other Objects

810 Dues and Fees 35,174.58

Total Other Objects \$35,174.58

Total 2500 Support Services – Business \$1,859,037.71

General Fund (10)

2510 Fiscal Services

Elementary

Secondary

Federal

Total

100 Personnel Services – Salaries

100 Personnel Services – Salaries 948,628.26

Total Personnel Services – Salaries \$948,628.26

200 Personnel Services – Employee Benefits

210 Group Insurance – Contracted Provider 3,250.14

220 Social Security Contributions 59,568.03

230 PSERS Retirement Contributions 234,877.40

250 Unemployment Compensation 189.19

260 Workers' Compensation 9,227.04

270 Group Insurance – Self-Insurance 241,490.95

290 Other Current Employee Benefits 7,106.52

Total Personnel Services – Employee Benefits \$555,709.27

300 Purchased Professional and Technical Services

324 Professional Educational Services – Employee Training and Development Services 663.00

330 Other Professional Services 9,550.00

Total Purchased Professional and Technical Services \$10,213.00

400 Purchased Property Services

430 Repairs and Maintenance Services 1,604.36

440 Rentals 5,170.81

Total Purchased Property Services \$6,775.17

500 Other Purchased Services

530 Communications 18,273.96

549 Other Advertising/Public Relations 102.16

550 Printing and Binding 1,398.33

580 Travel 1,941.49

Total Other Purchased Services \$21,715.94

600 Supplies

610 General Supplies 8,385.93

630 Food 160.00

640 Books and Periodicals 856.35

650 Supplies & Fees – Technology Related 56,488.25

Total Supplies \$65,890.53

700 Property

760 Equipment – Replacement 2,101.00

Total Property \$2,101.00

800 Other Objects

810 Dues and Fees 35,124.58

Total Other Objects \$35,124.58

Total 2510 Fiscal Services \$1,646,157.75

General Fund (10)

2511 Supervision of Fiscal Services - Head of Component

Elementary

Secondary

Federal

Total

100 Personnel Services – Salaries

100 Personnel Services – Salaries

317,411.62

Total Personnel Services – Salaries

\$317,411.62

200 Personnel Services – Employee Benefits

210 Group Insurance – Contracted Provider

1,976.17

220 Social Security Contributions

14,698.87

230 PSERS Retirement Contributions

71,744.71

250 Unemployment Compensation

63.34

260 Workers' Compensation

3,089.17

270 Group Insurance – Self-Insurance

42,511.77

290 Other Current Employee Benefits

2,379.23

Total Personnel Services – Employee Benefits

\$136,463.26

500 Other Purchased Services

530 Communications

464.22

580 Travel

623.38

Total Other Purchased Services

\$1,087.60

600 Supplies

610 General Supplies

39.63

Total Supplies

\$39.63

800 Other Objects

810 Dues and Fees

438.50

Total Other Objects

\$438.50

Total 2511 Supervision of Fiscal Services - Head of Component

\$455,440.61

General Fund (10)

2513 Receiving and Disbursing Funds Services	<u>Elementary</u>	<u>Secondary</u>	<u>Federal</u>	<u>Total</u>
100 Personnel Services – Salaries				
100 Personnel Services – Salaries				140,062.14
Total Personnel Services – Salaries				\$140,062.14
200 Personnel Services – Employee Benefits				
210 Group Insurance – Contracted Provider				171.73
220 Social Security Contributions				9,675.06
230 PSERS Retirement Contributions				36,568.22
250 Unemployment Compensation				27.88
260 Workers' Compensation				1,359.51
270 Group Insurance – Self-Insurance				57,084.83
290 Other Current Employee Benefits				1,047.07
Total Personnel Services – Employee Benefits				\$105,934.30
Total 2513 Receiving and Disbursing Funds Services				\$245,996.44

General Fund (10)

2514 Payroll Services

Elementary

Secondary

Federal

Total

100 Personnel Services – Salaries

100 Personnel Services – Salaries

101,568.90

Total Personnel Services – Salaries

\$101,568.90

200 Personnel Services – Employee Benefits

210 Group Insurance – Contracted Provider

231.98

220 Social Security Contributions

7,083.21

230 PSERS Retirement Contributions

25,688.89

250 Unemployment Compensation

20.23

260 Workers' Compensation

986.77

270 Group Insurance – Self-Insurance

39,534.77

290 Other Current Employee Benefits

759.99

Total Personnel Services – Employee Benefits

\$74,305.84

500 Other Purchased Services

530 Communications

16.30

Total Other Purchased Services

\$16.30

600 Supplies

650 Supplies & Fees – Technology Related

92.25

Total Supplies

\$92.25

Total 2514 Payroll Services

\$175,983.29

General Fund (10)

	<u>Elementary</u>	<u>Secondary</u>	<u>Federal</u>	<u>Total</u>
2515 Financial Accounting Services				
100 Personnel Services – Salaries				
100 Personnel Services – Salaries				339,299.90
Total Personnel Services – Salaries				\$339,299.90
200 Personnel Services – Employee Benefits				
210 Group Insurance – Contracted Provider				797.29
220 Social Security Contributions				24,593.68
230 PSERS Retirement Contributions				87,745.31
250 Unemployment Compensation				67.71
260 Workers' Compensation				3,302.19
270 Group Insurance – Self-Insurance				82,064.98
290 Other Current Employee Benefits				2,543.30
Total Personnel Services – Employee Benefits				\$201,114.46
300 Purchased Professional and Technical Services				
324 Professional Educational Services – Employee Training and Development Services				663.00
330 Other Professional Services				9,550.00
Total Purchased Professional and Technical Services				\$10,213.00
400 Purchased Property Services				
430 Repairs and Maintenance Services				1,604.36
440 Rentals				5,170.81
Total Purchased Property Services				\$6,775.17
500 Other Purchased Services				
530 Communications				17,793.44
549 Other Advertising/Public Relations				102.16
550 Printing and Binding				1,398.33
580 Travel				1,318.11
Total Other Purchased Services				\$20,612.04
600 Supplies				
610 General Supplies				8,346.30
630 Food				160.00
640 Books and Periodicals				856.35
650 Supplies & Fees – Technology Related				56,396.00
Total Supplies				\$65,758.65
700 Property				
760 Equipment – Replacement				2,101.00
Total Property				\$2,101.00
800 Other Objects				
810 Dues and Fees				34,686.08
Total Other Objects				\$34,686.08
Total 2515 Financial Accounting Services				\$680,560.30

General Fund (10)

2519 Other Fiscal Services

Elementary

Secondary

Federal

Total

100 Personnel Services – Salaries

100 Personnel Services – Salaries

50,285.70

Total Personnel Services – Salaries

\$50,285.70

200 Personnel Services – Employee Benefits

210 Group Insurance – Contracted Provider

72.97

220 Social Security Contributions

3,517.21

230 PSERS Retirement Contributions

13,130.27

250 Unemployment Compensation

10.03

260 Workers' Compensation

489.40

270 Group Insurance – Self-Insurance

20,294.60

290 Other Current Employee Benefits

376.93

Total Personnel Services – Employee Benefits

\$37,891.41

Total 2519 Other Fiscal Services

\$88,177.11

General Fund (10)

2520 Purchasing Services

Elementary

Secondary

Federal

Total

100 Personnel Services – Salaries

100 Personnel Services – Salaries

75,967.35

Total Personnel Services – Salaries

\$75,967.35

200 Personnel Services – Employee Benefits

210 Group Insurance – Contracted Provider

588.34

220 Social Security Contributions

5,387.36

230 PSERS Retirement Contributions

19,275.04

250 Unemployment Compensation

15.16

260 Workers' Compensation

739.34

270 Group Insurance – Self-Insurance

19,240.17

290 Other Current Employee Benefits

569.43

Total Personnel Services – Employee Benefits

\$45,814.84

Total 2520 Purchasing Services

\$121,782.19

General Fund (10)

2530 Warehousing and Distributing Services

Elementary

Secondary

Federal

Total

100 Personnel Services – Salaries

100 Personnel Services – Salaries

52,066.91

Total Personnel Services – Salaries

\$52,066.91

200 Personnel Services – Employee Benefits

210 Group Insurance – Contracted Provider

116.06

220 Social Security Contributions

3,621.85

230 PSERS Retirement Contributions

13,597.07

250 Unemployment Compensation

10.38

260 Workers' Compensation

506.19

270 Group Insurance – Self-Insurance

19,833.56

290 Other Current Employee Benefits

389.86

Total Personnel Services – Employee Benefits

\$38,074.97

600 Supplies

610 General Supplies

905.89

Total Supplies

\$905.89

800 Other Objects

810 Dues and Fees

50.00

Total Other Objects

\$50.00

Total 2530 Warehousing and Distributing Services

\$91,097.77

General Fund (10)

2600 Operation and Maintenance of Plant Services

Elementary

Secondary

Federal

Total

Total Other Objects

\$9,429.00

Total 2600 Operation and Maintenance of Plant Services

\$334,356.68

\$314,879.58

\$15,696,512.08

General Fund (10)

2610 Supervision of Operation and Maintenance of Plant Services

Elementary

Secondary

Federal

Total

100 Personnel Services – Salaries

100 Personnel Services – Salaries 1,841,495.07

Total Personnel Services – Salaries \$1,841,495.07

200 Personnel Services – Employee Benefits

210 Group Insurance – Contracted Provider 5,421.04

220 Social Security Contributions 132,084.25

230 PSERS Retirement Contributions 464,533.73

250 Unemployment Compensation 367.47

260 Workers' Compensation 17,922.06

270 Group Insurance – Self-Insurance 373,353.56

290 Other Current Employee Benefits 13,803.29

Total Personnel Services – Employee Benefits \$1,007,485.40

500 Other Purchased Services

530 Communications 22,837.32

580 Travel 3,017.81

Total Other Purchased Services \$25,855.13

600 Supplies

640 Books and Periodicals 356.43

Total Supplies \$356.43

800 Other Objects

810 Dues and Fees 2,678.00

Total Other Objects \$2,678.00

Total 2610 Supervision of Operation and Maintenance of Plant Services \$2,877,870.03

General Fund (10)

2611 Supervision of Operation and Maintenance of Plant Services – Head of Component

Elementary

Secondary

Federal

Total

100 Personnel Services – Salaries

100 Personnel Services – Salaries

215,906.51

Total Personnel Services – Salaries

\$215,906.51

200 Personnel Services – Employee Benefits

210 Group Insurance – Contracted Provider

1,404.09

220 Social Security Contributions

13,113.66

230 PSERS Retirement Contributions

52,806.22

250 Unemployment Compensation

43.08

260 Workers' Compensation

2,101.24

270 Group Insurance – Self-Insurance

17,178.85

290 Other Current Employee Benefits

1,618.34

Total Personnel Services – Employee Benefits

\$88,265.48

Total 2611 Supervision of Operation and Maintenance of Plant Services – Head of Component

\$304,171.99

General Fund (10)

2619 Supervision of Operation and Maintenance of Plant Services – All Other Supervision

Elementary

Secondary

Federal

Total

100 Personnel Services – Salaries

100 Personnel Services – Salaries 1,625,588.56

Total Personnel Services – Salaries \$1,625,588.56

200 Personnel Services – Employee Benefits

210 Group Insurance – Contracted Provider 4,016.95

220 Social Security Contributions 118,970.59

230 PSERS Retirement Contributions 411,727.51

250 Unemployment Compensation 324.39

260 Workers' Compensation 15,820.82

270 Group Insurance – Self-Insurance 356,174.71

290 Other Current Employee Benefits 12,184.95

Total Personnel Services – Employee Benefits \$919,219.92

500 Other Purchased Services

530 Communications 22,837.32

580 Travel 3,017.81

Total Other Purchased Services \$25,855.13

600 Supplies

640 Books and Periodicals 356.43

Total Supplies \$356.43

800 Other Objects

810 Dues and Fees 2,678.00

Total Other Objects \$2,678.00

Total 2619 Supervision of Operation and Maintenance of Plant Services – All Other Supervision \$2,573,698.04

General Fund (10)

	<u>Elementary</u>	<u>Secondary</u>	<u>Federal</u>	<u>Total</u>
2620 Operation of Buildings Services				
100 Personnel Services – Salaries				
100 Personnel Services – Salaries				4,304,880.06
Total Personnel Services – Salaries				\$4,304,880.06
200 Personnel Services – Employee Benefits				
210 Group Insurance – Contracted Provider				6,855.62
220 Social Security Contributions				320,777.54
230 PSERS Retirement Contributions				1,091,819.31
250 Unemployment Compensation				791.91
260 Workers' Compensation				38,621.40
270 Group Insurance – Self-Insurance				1,027,341.60
290 Other Current Employee Benefits				29,745.59
Total Personnel Services – Employee Benefits				\$2,515,952.97
300 Purchased Professional and Technical Services				
390 Other Purchased Professional and Technical Services				34,891.76
Total Purchased Professional and Technical Services				\$34,891.76
400 Purchased Property Services				
420 Utility Services				2,124,723.31
430 Repairs and Maintenance Services				563,629.22
440 Rentals				3,939.64
Total Purchased Property Services				\$2,692,292.17
500 Other Purchased Services				
521 Fire Insurance				163,599.00
522 Automotive Liability Insurance				45,571.00
523 General Property and Liability Insurance				127,521.00
529 Other Insurance				9,513.49
530 Communications				223,702.22
580 Travel				2,923.95
Total Other Purchased Services				\$572,830.66
600 Supplies				
610 General Supplies	268,507.31	252,866.10		521,373.41
620 Energy				550,352.77
630 Food				1,976.34
Total Supplies	\$268,507.31	\$252,866.10		\$1,073,702.52
700 Property				
750 Equipment – Original and Additional				8,926.04
760 Equipment – Replacement				147,103.84
Total Property				\$156,029.88
800 Other Objects				
810 Dues and Fees				6,516.00
Total Other Objects				\$6,516.00
Total 2620 Operation of Buildings Services	\$268,507.31	\$252,866.10		\$11,357,096.02

General Fund (10)

	<u>Elementary</u>	<u>Secondary</u>	<u>Federal</u>	<u>Total</u>
2630 Care and Upkeep of Grounds Services				
100 Personnel Services – Salaries				
100 Personnel Services – Salaries				562,377.23
Total Personnel Services – Salaries				\$562,377.23
200 Personnel Services – Employee Benefits				
210 Group Insurance – Contracted Provider				1,094.52
220 Social Security Contributions				43,306.04
230 PSERS Retirement Contributions				153,505.77
250 Unemployment Compensation				106.25
260 Workers' Compensation				5,182.06
270 Group Insurance – Self-Insurance				137,130.91
290 Other Current Employee Benefits				3,991.14
Total Personnel Services – Employee Benefits				\$344,316.69
400 Purchased Property Services				
430 Repairs and Maintenance Services				74,450.20
440 Rentals				2,899.37
Total Purchased Property Services				\$77,349.57
600 Supplies				
610 General Supplies	40,722.79	38,350.59		79,073.38
Total Supplies	\$40,722.79	\$38,350.59		\$79,073.38
700 Property				
750 Equipment – Original and Additional				14,778.47
760 Equipment – Replacement				40,563.20
Total Property				\$55,341.67
800 Other Objects				
810 Dues and Fees				235.00
Total Other Objects				\$235.00
Total 2630 Care and Upkeep of Grounds Services	\$40,722.79	\$38,350.59		\$1,118,693.54

General Fund (10)

	<u>Elementary</u>	<u>Secondary</u>	<u>Federal</u>	<u>Total</u>
2650 Vehicle Operation and Maintenance Services (Other Than Student Transportation Vehicles)				
100 Personnel Services – Salaries				
100 Personnel Services – Salaries				65,647.79
Total Personnel Services – Salaries				\$65,647.79
200 Personnel Services – Employee Benefits				
210 Group Insurance – Contracted Provider				396.04
220 Social Security Contributions				4,714.22
230 PSERS Retirement Contributions				17,140.67
250 Unemployment Compensation				12.92
260 Workers' Compensation				629.92
270 Group Insurance – Self-Insurance				18,380.93
290 Other Current Employee Benefits				485.16
Total Personnel Services – Employee Benefits				\$41,759.86
400 Purchased Property Services				
430 Repairs and Maintenance Services				19,085.94
Total Purchased Property Services				\$19,085.94
600 Supplies				
610 General Supplies	25,126.58	23,662.89		48,789.47
620 Energy				69,888.50
Total Supplies	\$25,126.58	\$23,662.89		\$118,677.97
Total 2650 Vehicle Operation and Maintenance Services (Other Than Student Transportation Vehicles)	\$25,126.58	\$23,662.89		\$245,171.56

General Fund (10)

2660 Safety and Security Services

Elementary

Secondary

Federal

Total

100 Personnel Services – Salaries

100 Personnel Services – Salaries

60,393.76

Total Personnel Services – Salaries

\$60,393.76

200 Personnel Services – Employee Benefits

210 Group Insurance – Contracted Provider

112.21

220 Social Security Contributions

4,406.52

230 PSERS Retirement Contributions

15,794.01

250 Unemployment Compensation

12.00

260 Workers' Compensation

585.40

270 Group Insurance – Self-Insurance

8,688.16

290 Other Current Employee Benefits

450.87

Total Personnel Services – Employee Benefits

\$30,049.17

300 Purchased Professional and Technical Services

350 Security / Safety Services

7,238.00

Total Purchased Professional and Technical Services

\$7,238.00

Total 2660 Safety and Security Services

\$97,680.93

General Fund (10)

2700 Student Transportation Services

Elementary Secondary Federal Total

100	<u>Personnel Services – Salaries</u>			
	100 Personnel Services – Salaries			215,608.82
Total Personnel Services – Salaries				\$215,608.82
200	<u>Personnel Services – Employee Benefits</u>			
	210 Group Insurance – Contracted Provider			583.25
	220 Social Security Contributions			15,775.85
	230 PSERS Retirement Contributions			55,277.37
	250 Unemployment Compensation			42.82
	260 Workers' Compensation			2,088.42
	270 Group Insurance – Self-Insurance			37,088.32
	290 Other Current Employee Benefits			1,608.46
Total Personnel Services – Employee Benefits				\$112,464.49
300	<u>Purchased Professional and Technical Services</u>			
	330 Other Professional Services			9,710.00
Total Purchased Professional and Technical Services				\$9,710.00
400	<u>Purchased Property Services</u>			
	440 Rentals			1,957.20
Total Purchased Property Services				\$1,957.20
500	<u>Other Purchased Services</u>			
	513 Contracted Carriers		10,000.00	12,808,874.03
	516 Student Transportation Services From the IU			16,335.19
	530 Communications			6,500.27
	550 Printing and Binding			4,373.31
	580 Travel			2,469.52
Total Other Purchased Services				\$10,000.00 \$12,838,552.32
600	<u>Supplies</u>			
	610 General Supplies			3,455.20
	640 Books and Periodicals			414.00
Total Supplies				\$3,869.20
700	<u>Property</u>			
	750 Equipment – Original and Additional			406.00
Total Property				\$406.00
800	<u>Other Objects</u>			
	810 Dues and Fees			1,084.00
Total Other Objects				\$1,084.00
Total 2700 Student Transportation Services				\$10,000.00 \$13,183,652.03

General Fund (10)

	<u>Elementary</u>	<u>Secondary</u>	<u>Federal</u>	<u>Total</u>
2710 Supervision of Student Transportation Services				
100 Personnel Services – Salaries				
100 Personnel Services – Salaries				102,028.01
Total Personnel Services – Salaries				\$102,028.01
200 Personnel Services – Employee Benefits				
210 Group Insurance – Contracted Provider				285.01
220 Social Security Contributions				7,458.60
230 PSERS Retirement Contributions				26,133.49
250 Unemployment Compensation				20.28
260 Workers' Compensation				988.99
270 Group Insurance – Self-Insurance				17,771.98
290 Other Current Employee Benefits				761.70
Total Personnel Services – Employee Benefits				\$53,420.05
300 Purchased Professional and Technical Services				
330 Other Professional Services				9,710.00
Total Purchased Professional and Technical Services				\$9,710.00
400 Purchased Property Services				
440 Rentals				1,957.20
Total Purchased Property Services				\$1,957.20
500 Other Purchased Services				
530 Communications				6,500.27
550 Printing and Binding				4,373.31
580 Travel				2,469.52
Total Other Purchased Services				\$13,343.10
600 Supplies				
610 General Supplies				3,455.20
640 Books and Periodicals				414.00
Total Supplies				\$3,869.20
700 Property				
750 Equipment – Original and Additional				406.00
Total Property				\$406.00
800 Other Objects				
810 Dues and Fees				1,084.00
Total Other Objects				\$1,084.00
Total 2710 Supervision of Student Transportation Services				\$185,817.56

General Fund (10)

2719 Supervision of Student Transportation Services – All Other Supervision

Elementary

Secondary

Federal

Total

100 Personnel Services – Salaries

100 Personnel Services – Salaries 102,028.01

Total Personnel Services – Salaries \$102,028.01

200 Personnel Services – Employee Benefits

210 Group Insurance – Contracted Provider 285.01

220 Social Security Contributions 7,458.60

230 PSERS Retirement Contributions 26,133.49

250 Unemployment Compensation 20.28

260 Workers' Compensation 988.99

270 Group Insurance – Self-Insurance 17,771.98

290 Other Current Employee Benefits 761.70

Total Personnel Services – Employee Benefits \$53,420.05

300 Purchased Professional and Technical Services

330 Other Professional Services 9,710.00

Total Purchased Professional and Technical Services \$9,710.00

400 Purchased Property Services

440 Rentals 1,957.20

Total Purchased Property Services \$1,957.20

500 Other Purchased Services

530 Communications 6,500.27

550 Printing and Binding 4,373.31

580 Travel 2,469.52

Total Other Purchased Services \$13,343.10

600 Supplies

610 General Supplies 3,455.20

640 Books and Periodicals 414.00

Total Supplies \$3,869.20

700 Property

750 Equipment – Original and Additional 406.00

Total Property \$406.00

800 Other Objects

810 Dues and Fees 1,084.00

Total Other Objects \$1,084.00

Total 2719 Supervision of Student Transportation Services – All Other Supervision \$185,817.56

LEA : 124159002 West Chester Area SD

Printed 12/19/2017 9:25:12 AM

General Fund (10)

2720 Vehicle Operation Services

Elementary

Secondary

Federal

Total

500 Other Purchased Services

513 Contracted Carriers

10,000.00

6,427,540.05

516 Student Transportation Services From the IU

16,335.19

Total Other Purchased Services

\$10,000.00

\$6,443,875.24

Total 2720 Vehicle Operation Services

\$10,000.00

\$6,443,875.24

General Fund (10)

2750 Nonpublic Transportation

Elementary

Secondary

Federal

Total

100 Personnel Services – Salaries

100 Personnel Services – Salaries

113,580.81

Total Personnel Services – Salaries

\$113,580.81

200 Personnel Services – Employee Benefits

210 Group Insurance – Contracted Provider

298.24

220 Social Security Contributions

8,317.25

230 PSERS Retirement Contributions

29,143.88

250 Unemployment Compensation

22.54

260 Workers' Compensation

1,099.43

270 Group Insurance – Self-Insurance

19,316.34

290 Other Current Employee Benefits

846.76

Total Personnel Services – Employee Benefits

\$59,044.44

500 Other Purchased Services

513 Contracted Carriers

6,381,333.98

Total Other Purchased Services

\$6,381,333.98

Total 2750 Nonpublic Transportation

\$6,553,959.23

General Fund (10)

2800 Support Services – Central

	<u>Elementary</u>	<u>Secondary</u>	<u>Federal</u>	<u>Total</u>
100 Personnel Services – Salaries				
100 Personnel Services – Salaries			11,483.23	1,713,967.21
Total Personnel Services – Salaries			\$11,483.23	\$1,713,967.21
200 Personnel Services – Employee Benefits				
210 Group Insurance – Contracted Provider			24.37	9,748.17
220 Social Security Contributions			795.41	119,152.80
230 PSERS Retirement Contributions			2,970.84	428,365.08
250 Unemployment Compensation				335.12
260 Workers' Compensation				16,344.04
270 Group Insurance – Self-Insurance			6.17	349,644.92
290 Other Current Employee Benefits				13,743.90
Total Personnel Services – Employee Benefits			\$3,796.79	\$937,334.03
300 Purchased Professional and Technical Services				
329 Professional Educational Services – Other				137,430.61
330 Other Professional Services				137,724.46
340 Technical Services				283,307.38
Total Purchased Professional and Technical Services				\$558,462.45
400 Purchased Property Services				
430 Repairs and Maintenance Services				69,846.62
440 Rentals				6,329.63
Total Purchased Property Services				\$76,176.25
500 Other Purchased Services				
530 Communications				14,604.00
550 Printing and Binding				74.73
580 Travel				6,666.71
Total Other Purchased Services				\$21,345.44
600 Supplies				
610 General Supplies				3,728.78
630 Food				1,011.54
650 Supplies & Fees – Technology Related				140,434.17
Total Supplies				\$145,174.49
700 Property				
750 Equipment – Original and Additional				4,253.91
Total Property				\$4,253.91
800 Other Objects				
810 Dues and Fees				32,353.99
Total Other Objects				\$32,353.99
Total 2800 Support Services – Central			\$15,280.02	\$3,489,067.77

General Fund (10)

	<u>Elementary</u>	<u>Secondary</u>	<u>Federal</u>	<u>Total</u>
2810 Planning, Research, Development and Evaluation Services				
500 <u>Other Purchased Services</u>				
530 Communications				6,587.42
Total Other Purchased Services				\$6,587.42
600 <u>Supplies</u>				
650 Supplies & Fees – Technology Related				1,853.99
Total Supplies				\$1,853.99
Total 2810 Planning, Research, Development and Evaluation Services				\$8,441.41

General Fund (10)

2820 Information Services

Elementary Secondary Federal Total

100 Personnel Services – Salaries

100 Personnel Services – Salaries 942,434.30

Total Personnel Services – Salaries \$942,434.30

200 Personnel Services – Employee Benefits

210 Group Insurance – Contracted Provider 6,901.78

220 Social Security Contributions 65,257.98

230 PSERS Retirement Contributions 238,949.57

250 Unemployment Compensation 186.50

260 Workers' Compensation 9,095.88

270 Group Insurance – Self-Insurance 213,447.59

290 Other Current Employee Benefits 7,005.50

Total Personnel Services – Employee Benefits \$540,844.80

300 Purchased Professional and Technical Services

340 Technical Services 282,548.33

Total Purchased Professional and Technical Services \$282,548.33

400 Purchased Property Services

430 Repairs and Maintenance Services 69,846.62

Total Purchased Property Services \$69,846.62

500 Other Purchased Services

530 Communications 6,166.07

580 Travel 2,823.35

Total Other Purchased Services \$8,989.42

600 Supplies

650 Supplies & Fees – Technology Related 138,580.18

Total Supplies \$138,580.18

Total 2820 Information Services \$1,983,243.65

General Fund (10)

2821 Supervision of Information Services

Elementary

Secondary

Federal

Total

100 Personnel Services – Salaries

100 Personnel Services – Salaries

208,437.70

Total Personnel Services – Salaries

\$208,437.70

200 Personnel Services – Employee Benefits

210 Group Insurance – Contracted Provider

5,641.28

220 Social Security Contributions

12,443.43

230 PSERS Retirement Contributions

50,854.43

250 Unemployment Compensation

41.59

260 Workers' Compensation

2,028.59

270 Group Insurance – Self-Insurance

27,496.20

290 Other Current Employee Benefits

1,562.39

Total Personnel Services – Employee Benefits

\$100,067.91

Total 2821 Supervision of Information Services

\$308,505.61

General Fund (10)

2829 Other Information Services

Elementary Secondary Federal Total

100 Personnel Services – Salaries

100 Personnel Services – Salaries 733,996.60

Total Personnel Services – Salaries \$733,996.60

200 Personnel Services – Employee Benefits

210 Group Insurance – Contracted Provider 1,260.50

220 Social Security Contributions 52,814.55

230 PSERS Retirement Contributions 188,095.14

250 Unemployment Compensation 144.91

260 Workers' Compensation 7,067.29

270 Group Insurance – Self-Insurance 185,951.39

290 Other Current Employee Benefits 5,443.11

Total Personnel Services – Employee Benefits \$440,776.89

300 Purchased Professional and Technical Services

340 Technical Services 282,548.33

Total Purchased Professional and Technical Services \$282,548.33

400 Purchased Property Services

430 Repairs and Maintenance Services 69,846.62

Total Purchased Property Services \$69,846.62

500 Other Purchased Services

530 Communications 6,166.07

580 Travel 2,823.35

Total Other Purchased Services \$8,989.42

600 Supplies

650 Supplies & Fees – Technology Related 138,580.18

Total Supplies \$138,580.18

Total 2829 Other Information Services \$1,674,738.04

General Fund (10)

2830 Staff Services

Elementary Secondary Federal Total

100 Personnel Services – Salaries				
100 Personnel Services – Salaries				472,381.32
Total Personnel Services – Salaries				\$472,381.32
200 Personnel Services – Employee Benefits				
210 Group Insurance – Contracted Provider				1,756.53
220 Social Security Contributions				32,032.66
230 PSERS Retirement Contributions				113,534.48
250 Unemployment Compensation				92.90
260 Workers' Compensation				4,530.86
270 Group Insurance – Self-Insurance				63,071.05
290 Other Current Employee Benefits				4,645.58
Total Personnel Services – Employee Benefits				\$219,664.06
300 Purchased Professional and Technical Services				
329 Professional Educational Services – Other				137,430.61
330 Other Professional Services				137,724.46
Total Purchased Professional and Technical Services				\$275,155.07
400 Purchased Property Services				
440 Rentals				3,045.03
Total Purchased Property Services				\$3,045.03
500 Other Purchased Services				
530 Communications				1,850.51
550 Printing and Binding				74.73
580 Travel				3,843.36
Total Other Purchased Services				\$5,768.60
600 Supplies				
610 General Supplies				2,758.64
630 Food				1,011.54
Total Supplies				\$3,770.18
700 Property				
750 Equipment – Original and Additional				4,253.91
Total Property				\$4,253.91
800 Other Objects				
810 Dues and Fees				32,353.99
Total Other Objects				\$32,353.99
Total 2830 Staff Services				\$1,016,392.16

General Fund (10)

2831 Supervision of Staff Services

Elementary

Secondary

Federal

Total

100 Personnel Services – Salaries

100 Personnel Services – Salaries

223,322.87

Total Personnel Services – Salaries

\$223,322.87

200 Personnel Services – Employee Benefits

210 Group Insurance – Contracted Provider

976.38

220 Social Security Contributions

13,665.68

230 PSERS Retirement Contributions

54,264.75

250 Unemployment Compensation

44.49

260 Workers' Compensation

2,169.78

270 Group Insurance – Self-Insurance

25,492.16

290 Other Current Employee Benefits

1,671.13

Total Personnel Services – Employee Benefits

\$98,284.37

500 Other Purchased Services

530 Communications

760.19

580 Travel

615.61

Total Other Purchased Services

\$1,375.80

Total 2831 Supervision of Staff Services

\$322,983.04

General Fund (10)

2832 Recruitment and Placement Services

Elementary

Secondary

Federal

Total

100 Personnel Services – Salaries

100 Personnel Services – Salaries

82,274.70

Total Personnel Services – Salaries

\$82,274.70

200 Personnel Services – Employee Benefits

210 Group Insurance – Contracted Provider

539.57

220 Social Security Contributions

6,284.85

230 PSERS Retirement Contributions

19,505.44

250 Unemployment Compensation

16.42

260 Workers' Compensation

800.73

270 Group Insurance – Self-Insurance

2,297.36

290 Other Current Employee Benefits

616.71

Total Personnel Services – Employee Benefits

\$30,061.08

Total 2832 Recruitment and Placement Services

\$112,335.78

General Fund (10)

2835 Health Services

Elementary

Secondary

Federal

Total

100 Personnel Services – Salaries

100 Personnel Services – Salaries

61,340.12

Total Personnel Services – Salaries

\$61,340.12

200 Personnel Services – Employee Benefits

210 Group Insurance – Contracted Provider

103.42

220 Social Security Contributions

4,321.42

230 PSERS Retirement Contributions

15,310.06

250 Unemployment Compensation

12.24

260 Workers' Compensation

596.98

270 Group Insurance – Self-Insurance

17,796.50

290 Other Current Employee Benefits

459.79

Total Personnel Services – Employee Benefits

\$38,600.41

Total 2835 Health Services

\$99,940.53

General Fund (10)

2839 Other Staff Services

Elementary Secondary Federal Total

100 Personnel Services – Salaries				
100 Personnel Services – Salaries				105,443.63
Total Personnel Services – Salaries				\$105,443.63
200 Personnel Services – Employee Benefits				
210 Group Insurance – Contracted Provider				137.16
220 Social Security Contributions				7,760.71
230 PSERS Retirement Contributions				24,454.23
250 Unemployment Compensation				19.75
260 Workers' Compensation				963.37
270 Group Insurance – Self-Insurance				17,485.03
290 Other Current Employee Benefits				1,897.95
Total Personnel Services – Employee Benefits				\$52,718.20
300 Purchased Professional and Technical Services				
329 Professional Educational Services – Other				137,430.61
330 Other Professional Services				137,724.46
Total Purchased Professional and Technical Services				\$275,155.07
400 Purchased Property Services				
440 Rentals				3,045.03
Total Purchased Property Services				\$3,045.03
500 Other Purchased Services				
530 Communications				1,090.32
550 Printing and Binding				74.73
580 Travel				3,227.75
Total Other Purchased Services				\$4,392.80
600 Supplies				
610 General Supplies				2,758.64
630 Food				1,011.54
Total Supplies				\$3,770.18
700 Property				
750 Equipment – Original and Additional				4,253.91
Total Property				\$4,253.91
800 Other Objects				
810 Dues and Fees				32,353.99
Total Other Objects				\$32,353.99
Total 2839 Other Staff Services				\$481,132.81

General Fund (10)

2840 Data Processing Services

Elementary Secondary Federal Total

100 Personnel Services – Salaries

100 Personnel Services – Salaries 287,668.36

Total Personnel Services – Salaries \$287,668.36

200 Personnel Services – Employee Benefits

210 Group Insurance – Contracted Provider 1,065.49

220 Social Security Contributions 21,066.75

230 PSERS Retirement Contributions 72,910.19

250 Unemployment Compensation 55.72

260 Workers' Compensation 2,717.30

270 Group Insurance – Self-Insurance 73,120.11

290 Other Current Employee Benefits 2,092.82

Total Personnel Services – Employee Benefits \$173,028.38

300 Purchased Professional and Technical Services

340 Technical Services 759.05

Total Purchased Professional and Technical Services \$759.05

400 Purchased Property Services

440 Rentals 3,284.60

Total Purchased Property Services \$3,284.60

600 Supplies

610 General Supplies 970.14

Total Supplies \$970.14

Total 2840 Data Processing Services \$465,710.53

General Fund (10)

2850 State and Federal Agency Liaison Services

Elementary

Secondary

Federal

Total

100 Personnel Services – Salaries

100 Personnel Services – Salaries

11,483.23

11,483.23

Total Personnel Services – Salaries

\$11,483.23

\$11,483.23

200 Personnel Services – Employee Benefits

210 Group Insurance – Contracted Provider

24.37

24.37

220 Social Security Contributions

795.41

795.41

230 PSERS Retirement Contributions

2,970.84

2,970.84

270 Group Insurance – Self-Insurance

6.17

6.17

Total Personnel Services – Employee Benefits

\$3,796.79

\$3,796.79

Total 2850 State and Federal Agency Liaison Services

\$15,280.02

\$15,280.02

LEA : 124159002 West Chester Area SD

Printed 12/19/2017 9:25:12 AM

General Fund (10)

2900 Other Support Services

Elementary

Secondary

Federal

Total

500 Other Purchased Services

595 IU Payments By Withholding

127,780.05

Total Other Purchased Services

\$127,780.05

Total 2900 Other Support Services

\$127,780.05

General Fund (10)

2910 Support Services Not Listed Elsewhere In the 2000 Series

Elementary

Secondary

Federal

Total

500 Other Purchased Services

595 IU Payments By Withholding

127,780.05

Total Other Purchased Services

\$127,780.05

Total 2910 Support Services Not Listed Elsewhere In the 2000 Series

\$127,780.05

General Fund (10)

3000 Operation of Non-Instructional Services

Total

100 Personnel Services – Salaries

100 Personnel Services – Salaries 2,752,218.51

Total Personnel Services – Salaries \$2,752,218.51

200 Personnel Services – Employee Benefits

210 Group Insurance – Contracted Provider 5,372.30

220 Social Security Contributions 206,106.17

230 PSERS Retirement Contributions 551,425.58

250 Unemployment Compensation 128.13

260 Workers’ Compensation 6,248.82

270 Group Insurance – Self-Insurance 123,997.30

290 Other Current Employee Benefits 4,812.74

Total Personnel Services – Employee Benefits \$898,091.04

300 Purchased Professional and Technical Services

329 Professional Educational Services – Other 2,408.70

350 Security / Safety Services 116,528.44

390 Other Purchased Professional and Technical Services 201,342.79

Total Purchased Professional and Technical Services \$320,279.93

400 Purchased Property Services

430 Repairs and Maintenance Services 23,583.49

440 Rentals 102,242.66

Total Purchased Property Services \$125,826.15

500 Other Purchased Services

510 Student Transportation Services 248,699.44

520 Insurance – General 38,571.00

530 Communications 2,519.88

550 Printing and Binding 1,192.00

580 Travel 46,466.79

Total Other Purchased Services \$337,449.11

600 Supplies

610 General Supplies 273,442.86

630 Food 1,069.19

640 Books and Periodicals 4,008.50

Total Supplies \$278,520.55

700 Property

750 Equipment – Original and Additional 1,549.41

Total Property \$1,549.41

800 Other Objects

810 Dues and Fees 89,170.62

Total Other Objects \$89,170.62

Total 3000 Operation of Non-Instructional Services \$4,803,105.32

General Fund (10)

3200 Student Activities

Elementary Secondary Federal Total

100 Personnel Services – Salaries

100 Personnel Services – Salaries 2,751,371.05

Total Personnel Services – Salaries \$2,751,371.05

200 Personnel Services – Employee Benefits

210 Group Insurance – Contracted Provider 5,371.67

220 Social Security Contributions 206,043.57

230 PSERS Retirement Contributions 551,206.58

250 Unemployment Compensation 128.13

260 Workers' Compensation 6,248.82

270 Group Insurance – Self-Insurance 123,997.30

290 Other Current Employee Benefits 4,812.74

Total Personnel Services – Employee Benefits \$897,808.81

300 Purchased Professional and Technical Services

329 Professional Educational Services – Other 2,408.70

390 Other Purchased Professional and Technical Services 201,342.79

Total Purchased Professional and Technical Services \$203,751.49

400 Purchased Property Services

430 Repairs and Maintenance Services 23,583.49

440 Rentals 102,242.66

Total Purchased Property Services \$125,826.15

500 Other Purchased Services

510 Student Transportation Services 248,699.44

520 Insurance – General 38,571.00

530 Communications 2,519.88

550 Printing and Binding 1,192.00

580 Travel 39,951.48

Total Other Purchased Services \$330,933.80

600 Supplies

610 General Supplies 268,782.58

640 Books and Periodicals 190.00

Total Supplies \$268,972.58

700 Property

750 Equipment – Original and Additional 1,549.41

Total Property \$1,549.41

800 Other Objects

810 Dues and Fees 89,170.62

Total Other Objects \$89,170.62

Total 3200 Student Activities \$4,669,383.91

General Fund (10)

5000 Other Expenditures and Financing Uses

Total

800 Other Objects

830 Interest 10,174,433.34

Total Other Objects \$10,174,433.34

900 Other Uses of Funds

910 Redemption of Principal 8,176,000.00

932 Capital Reserve Fund Transfers Applicable To Fund 32 9,107,246.68

Total Other Uses of Funds \$17,283,246.68

Total 5000 Other Expenditures and Financing Uses \$27,457,680.02

General Fund (10)

	<u>Elementary</u>	<u>Secondary</u>	<u>Federal</u>	<u>Total</u>
5100 Debt Service / Other Expenditures and Financing Uses				
800 Other Objects				
830 Interest				10,174,433.34
Total Other Objects				\$10,174,433.34
900 Other Uses of Funds				
910 Redemption of Principal				8,176,000.00
Total Other Uses of Funds				\$8,176,000.00
Total 5100 Debt Service / Other Expenditures and Financing Uses				\$18,350,433.34

LEA : 124159002 West Chester Area SD

Printed 12/19/2017 9:25:20 AM

General Fund (10)

	<u>Elementary</u>	<u>Secondary</u>	<u>Federal</u>	<u>Total</u>
5110 Debt Service				
800 Other Objects				
830 Interest				10,174,433.34
Total Other Objects				\$10,174,433.34
900 Other Uses of Funds				
910 Redemption of Principal				8,176,000.00
Total Other Uses of Funds				\$8,176,000.00
Total 5110 Debt Service				\$18,350,433.34

General Fund (10)

5200 Interfund Transfers – Out

Elementary

Secondary

Federal

Total

900 Other Uses of Funds

932 Capital Reserve Fund Transfers Applicable To Fund 32

9,107,246.68

Total Other Uses of Funds

\$9,107,246.68

Total 5200 Interfund Transfers – Out

\$9,107,246.68

LEA : 124159002 West Chester Area SD

Printed 12/19/2017 9:25:20 AM

General Fund (10)

5230 Capital Projects Fund Transfers

Elementary

Secondary

Federal

Total

900 Other Uses of Funds

932 Capital Reserve Fund Transfers Applicable To Fund 32

9,107,246.68

Total Other Uses of Funds

\$9,107,246.68

Total 5230 Capital Projects Fund Transfers

\$9,107,246.68

Capital Reserve Fund - § 1431 (32)

2000 Support Services

300 Purchased Professional and Technical Services

330 Other Professional Services	3,500.00
340 Technical Services	3,448.43

Total Purchased Professional and Technical Services	\$6,948.43
--	-------------------

500 Other Purchased Services

520 Insurance – General	5,661.20
-------------------------	----------

Total Other Purchased Services	\$5,661.20
---------------------------------------	-------------------

700 Property

750 Equipment – Original and Additional	154,286.91
760 Equipment – Replacement	2,620,620.68

Total Property	\$2,774,907.59
-----------------------	-----------------------

Total 2000 Support Services	\$2,787,517.22
------------------------------------	-----------------------

LEA : 124159002 West Chester Area SD

Printed 12/19/2017 9:25:15 AM

Capital Reserve Fund - § 1431 (32)

2200 Support Services – Instructional Staff

700 Property

750 Equipment – Original and Additional

760 Equipment – Replacement

Total Property

Total 2200 Support Services – Instructional Staff

	<u>Elementary</u>	<u>Secondary</u>	<u>Federal</u>	<u>Total</u>
	2,003.26	79,931.56		81,934.82
	618,025.04	1,298,947.97		1,916,973.01
Total Property	\$620,028.30	\$1,378,879.53		\$1,998,907.83
Total 2200 Support Services – Instructional Staff	\$620,028.30	\$1,378,879.53		\$1,998,907.83

LEA : 124159002 West Chester Area SD

Printed 12/19/2017 9:25:15 AM

Capital Reserve Fund - § 1431 (32)

2210 Supervision of Educational Media Services

700 Property

750 Equipment – Original and Additional

	<u>Elementary</u>	<u>Secondary</u>	<u>Federal</u>	<u>Total</u>
750 Equipment – Original and Additional	429.42	404.40		833.82
Total Property	\$429.42	\$404.40		\$833.82
Total 2210 Supervision of Educational Media Services	\$429.42	\$404.40		\$833.82

LEA : 124159002 West Chester Area SD

Printed 12/19/2017 9:25:15 AM

Capital Reserve Fund - § 1431 (32)

2219 Supervision of Educational Media Services – All Other Supervision

	<u>Elementary</u>	<u>Secondary</u>	<u>Federal</u>	<u>Total</u>
700 Property				
750 Equipment – Original and Additional	429.42	404.40		833.82
Total Property	\$429.42	\$404.40		\$833.82
Total 2219 Supervision of Educational Media Services – All Other Supervision	\$429.42	\$404.40		\$833.82

LEA : 124159002 West Chester Area SD

Printed 12/19/2017 9:25:15 AM

Capital Reserve Fund - § 1431 (32)

2220 Technology Support Services

700 Property

750 Equipment – Original and Additional

760 Equipment – Replacement

Total Property

Total 2220 Technology Support Services

	<u>Elementary</u>	<u>Secondary</u>	<u>Federal</u>	<u>Total</u>
		78,045.00		78,045.00
	618,025.04	1,298,947.97		1,916,973.01
Total Property	\$618,025.04	\$1,376,992.97		\$1,995,018.01
Total 2220 Technology Support Services	\$618,025.04	\$1,376,992.97		\$1,995,018.01

LEA : 124159002 West Chester Area SD

Printed 12/19/2017 9:25:15 AM

Capital Reserve Fund - § 1431 (32)

2270 Instructional Staff Professional Development Services

700 Property

750 Equipment – Original and Additional

	<u>Elementary</u>	<u>Secondary</u>	<u>Federal</u>	<u>Total</u>
750 Equipment – Original and Additional	1,573.84	1,482.16		3,056.00
Total Property	\$1,573.84	\$1,482.16		\$3,056.00
Total 2270 Instructional Staff Professional Development Services	\$1,573.84	\$1,482.16		\$3,056.00

Capital Reserve Fund - § 1431 (32)

2300 Support Services – Administration

Elementary

Secondary

Federal

Total

300 Purchased Professional and Technical Services

330 Other Professional Services

3,500.00

Total Purchased Professional and Technical Services

\$3,500.00

700 Property

750 Equipment – Original and Additional

72,352.09

Total Property

\$72,352.09

Total 2300 Support Services – Administration

\$75,852.09

LEA : 124159002 West Chester Area SD

Printed 12/19/2017 9:25:15 AM

Capital Reserve Fund - § 1431 (32)

2350 Legal and Accounting Services

Elementary

Secondary

Federal

Total

300 Purchased Professional and Technical Services

330 Other Professional Services

3,500.00

Total Purchased Professional and Technical Services

\$3,500.00

Total 2350 Legal and Accounting Services

\$3,500.00

LEA : 124159002 West Chester Area SD

Printed 12/19/2017 9:25:15 AM

Capital Reserve Fund - § 1431 (32)

2390 Other Administration Services

Elementary

Secondary

Federal

Total

700 Property

750 Equipment – Original and Additional

72,352.09

Total Property

\$72,352.09

Total 2390 Other Administration Services

\$72,352.09

LEA : 124159002 West Chester Area SD

Printed 12/19/2017 9:25:15 AM

Capital Reserve Fund - § 1431 (32)

2500 Support Services – Business

Elementary

Secondary

Federal

Total

700 Property

760 Equipment – Replacement

53,767.82

Total Property

\$53,767.82

Total 2500 Support Services – Business

\$53,767.82

LEA : 124159002 West Chester Area SD

Printed 12/19/2017 9:25:15 AM

Capital Reserve Fund - § 1431 (32)

2590 Other Support Services – Business

Elementary

Secondary

Federal

Total

700 Property

760 Equipment – Replacement

53,767.82

Total Property

\$53,767.82

Total 2590 Other Support Services – Business

\$53,767.82

Capital Reserve Fund - § 1431 (32)

2800 Support Services – Central

Elementary

Secondary

Federal

Total

300 Purchased Professional and Technical Services

340 Technical Services

3,448.43

Total Purchased Professional and Technical Services

\$3,448.43

500 Other Purchased Services

520 Insurance – General

5,661.20

Total Other Purchased Services

\$5,661.20

700 Property

760 Equipment – Replacement

649,879.85

Total Property

\$649,879.85

Total 2800 Support Services – Central

\$658,989.48

LEA : 124159002 West Chester Area SD

Printed 12/19/2017 9:25:15 AM

Capital Reserve Fund - § 1431 (32)

2810 Planning, Research, Development and Evaluation Services

Elementary

Secondary

Federal

Total

500 Other Purchased Services

520 Insurance – General

154,450.00

Total Other Purchased Services

\$154,450.00

Total 2810 Planning, Research, Development and Evaluation Services

\$154,450.00

LEA : 124159002 West Chester Area SD

Printed 12/19/2017 9:25:15 AM

Capital Reserve Fund - § 1431 (32)

	<u>Elementary</u>	<u>Secondary</u>	<u>Federal</u>	<u>Total</u>
2820 Information Services				
300 <u>Purchased Professional and Technical Services</u>				
340 Technical Services				3,448.43
Total Purchased Professional and Technical Services				\$3,448.43
500 <u>Other Purchased Services</u>				
520 Insurance – General				(148,788.80)
Total Other Purchased Services				(\$148,788.80)
700 <u>Property</u>				
760 Equipment – Replacement				649,879.85
Total Property				\$649,879.85
Total 2820 Information Services				\$504,539.48

Capital Reserve Fund - § 1431 (32)

2829 Other Information Services

Elementary

Secondary

Federal

Total

300 Purchased Professional and Technical Services

340 Technical Services

3,448.43

Total Purchased Professional and Technical Services

\$3,448.43

500 Other Purchased Services

520 Insurance – General

(148,788.80)

Total Other Purchased Services

(\$148,788.80)

700 Property

760 Equipment – Replacement

649,879.85

Total Property

\$649,879.85

Total 2829 Other Information Services

\$504,539.48

Capital Reserve Fund - § 1431 (32)

4000 Facilities Acquisition, Construction and Improvement Services

Total

300 Purchased Professional and Technical Services

330 Other Professional Services 21,410.00

390 Other Purchased Professional and Technical Services 957,431.62

Total Purchased Professional and Technical Services \$978,841.62

700 Property

750 Equipment – Original and Additional 191,520.57

Total Property \$191,520.57

Total 4000 Facilities Acquisition, Construction and Improvement Services \$1,170,362.19

Capital Reserve Fund - § 1431 (32)

4500 Building Acquisition and Construction Services – Original and Additional

Elementary

Secondary

Federal

Total

300 Purchased Professional and Technical Services

330 Other Professional Services

21,410.00

390 Other Purchased Professional and Technical Services

957,431.62

Total Purchased Professional and Technical Services

\$978,841.62

700 Property

750 Equipment – Original and Additional

191,520.57

Total Property

\$191,520.57

Total 4500 Building Acquisition and Construction Services – Original and Additional

\$1,170,362.19

Other Capital Projects Fund (39)

2000 Support Services

800 Other Objects

810 Dues and Fees

Total

116,979.61

Total Other Objects

\$116,979.61

Total 2000 Support Services

\$116,979.61

LEA : 124159002 West Chester Area SD

Printed 12/19/2017 9:25:16 AM

Other Capital Projects Fund (39)

2300 Support Services – Administration

Elementary

Secondary

Federal

Total

800 Other Objects

810 Dues and Fees

116,979.61

Total Other Objects

\$116,979.61

Total 2300 Support Services – Administration

\$116,979.61

LEA : 124159002 West Chester Area SD

Printed 12/19/2017 9:25:16 AM

Other Capital Projects Fund (39)

2390 Other Administration Services

Elementary

Secondary

Federal

Total

800 Other Objects

810 Dues and Fees

116,979.61

Total Other Objects

\$116,979.61

Total 2390 Other Administration Services

\$116,979.61

Other Capital Projects Fund (39)

4000 Facilities Acquisition, Construction and Improvement Services

Total

100 Personnel Services – Salaries

100 Personnel Services – Salaries 238,949.44

Total Personnel Services – Salaries \$238,949.44

200 Personnel Services – Employee Benefits

210 Group Insurance – Contracted Provider 1,503.12

220 Social Security Contributions 17,571.13

230 PSERS Retirement Contributions 59,687.48

270 Group Insurance – Self-Insurance 41,021.10

Total Personnel Services – Employee Benefits \$119,782.83

300 Purchased Professional and Technical Services

330 Other Professional Services 797,202.22

390 Other Purchased Professional and Technical Services 5,850,139.95

Total Purchased Professional and Technical Services \$6,647,342.17

600 Supplies

610 General Supplies 842.25

Total Supplies \$842.25

700 Property

750 Equipment – Original and Additional 144,028.64

760 Equipment – Replacement 9,397.00

Total Property \$153,425.64

Total 4000 Facilities Acquisition, Construction and Improvement Services \$7,160,342.33

Other Capital Projects Fund (39)

4600 Existing Building Improvement Services

Elementary

Secondary

Federal

Total

100 Personnel Services – Salaries

100 Personnel Services – Salaries

238,949.44

Total Personnel Services – Salaries

\$238,949.44

200 Personnel Services – Employee Benefits

210 Group Insurance – Contracted Provider

1,503.12

220 Social Security Contributions

17,571.13

230 PSERS Retirement Contributions

59,687.48

270 Group Insurance – Self-Insurance

41,021.10

Total Personnel Services – Employee Benefits

\$119,782.83

300 Purchased Professional and Technical Services

330 Other Professional Services

797,202.22

390 Other Purchased Professional and Technical Services

5,850,139.95

Total Purchased Professional and Technical Services

\$6,647,342.17

600 Supplies

610 General Supplies

842.25

Total Supplies

\$842.25

700 Property

750 Equipment – Original and Additional

144,028.64

760 Equipment – Replacement

9,397.00

Total Property

\$153,425.64

Total 4600 Existing Building Improvement Services

\$7,160,342.33

LEA : 124159002 West Chester Area SD

Printed 12/19/2017 9:25:17 AM

Debt Service Fund (40)

2000 Support Services

800 Other Objects

810 Dues and Fees

347,273.00

Total Other Objects

\$347,273.00

Total 2000 Support Services

\$347,273.00

LEA : 124159002 West Chester Area SD

Printed 12/19/2017 9:25:17 AM

Debt Service Fund (40)

2300 Support Services – Administration

Elementary

Secondary

Federal

Total

800 Other Objects

810 Dues and Fees

347,273.00

Total Other Objects

\$347,273.00

Total 2300 Support Services – Administration

\$347,273.00

LEA : 124159002 West Chester Area SD

Printed 12/19/2017 9:25:17 AM

Debt Service Fund (40)

2390 Other Administration Services

Elementary

Secondary

Federal

Total

800 Other Objects

810 Dues and Fees

347,273.00

Total Other Objects

\$347,273.00

Total 2390 Other Administration Services

\$347,273.00

LEA : 124159002 West Chester Area SD

Printed 12/19/2017 9:25:21 AM

Debt Service Fund (40)

5000 Other Expenditures and Financing Uses

Total

900 Other Uses of Funds

910 Redemption of Principal

60,135,702.00

939 Other Fund Transfers

18,537.00

Total Other Uses of Funds

\$60,154,239.00

Total 5000 Other Expenditures and Financing Uses

\$60,154,239.00

Debt Service Fund (40)

5100 Debt Service / Other Expenditures and Financing Uses

Elementary

Secondary

Federal

Total

900 Other Uses of Funds

910 Redemption of Principal

60,135,702.00

Total Other Uses of Funds

\$60,135,702.00

Total 5100 Debt Service / Other Expenditures and Financing Uses

\$60,135,702.00

LEA : 124159002 West Chester Area SD

Printed 12/19/2017 9:25:21 AM

Debt Service Fund (40)

5120 Debt Service – Refunded Bonds

Elementary

Secondary

Federal

Total

900 Other Uses of Funds

910 Redemption of Principal

60,135,702.00

Total Other Uses of Funds

\$60,135,702.00

Total 5120 Debt Service – Refunded Bonds

\$60,135,702.00

LEA : 124159002 West Chester Area SD

Printed 12/19/2017 9:25:21 AM

Debt Service Fund (40)

5200 Interfund Transfers – Out

Elementary

Secondary

Federal

Total

900 Other Uses of Funds

939 Other Fund Transfers

18,537.00

Total Other Uses of Funds

\$18,537.00

Total 5200 Interfund Transfers – Out

\$18,537.00

LEA : 124159002 West Chester Area SD

Printed 12/19/2017 9:25:21 AM

Debt Service Fund (40)

5230 Capital Projects Fund Transfers

Elementary

Secondary

Federal

Total

900 Other Uses of Funds

939 Other Fund Transfers

18,537.00

Total Other Uses of Funds

\$18,537.00

Total 5230 Capital Projects Fund Transfers

\$18,537.00

	<u>General Fund(10)</u>	<u>Public Purpose Trust(27)</u>	<u>Other Compt Approved (28)</u>	<u>Athletic / Activity(29)</u>	<u>Capital Reserve (690, 1850)(31)</u>
1000 Instruction					
1100 Regular Programs - Elementary / Secondary	86,949,385.07				
1200 Special Programs - Elementary / Secondary	37,100,390.46				
1300 Vocational Education	5,755,520.61				
1400 Other Instructional Programs - Elementary / Secondary	668,125.94				
1500 Nonpublic School Programs	21,942.32				
Total Instruction	\$130,495,364.40				
2000 Support Services					
2100 Support Services - Students	8,637,182.24				
2200 Support Services - Instructional Staff	5,213,154.47				
2300 Support Services - Administration	10,569,908.93				
2400 Support Services - Pupil Health	2,165,522.40				
2500 Support Services - Business	1,859,037.71				
2600 Operation and Maintenance of Plant Services	15,696,512.08				
2700 Student Transportation Services	13,183,652.03				
2800 Support Services - Central	3,489,067.77				
2900 Other Support Services	127,780.05				
Total Support Services	\$60,941,817.68				
3000 Operation of Non-Instructional Services					
3200 Student Activities	4,669,383.91				
3300 Community Services	133,721.41				
Total Operation of Non-Instructional Services	\$4,803,105.32				
4000 Facilities Acquisition, Construction and Improvement Services					
4500 Building Acquisition and Construction Services - Original and Additional					
4600 Existing Building Improvement Services					
Total Facilities Acquisition, Construction and Improvement Services					
5000 Other Expenditures and Financing Uses					
5100 Debt Service / Other Expenditures and Financing Uses	18,350,433.34				
5200 Interfund Transfers - Out	9,107,246.68				
Total Other Expenditures and Financing Uses	\$27,457,680.02				
TOTAL ACTUAL EXPENDITURES & OTHER FINANCING USES	\$223,697,967.42				

	<u>Capital Reserve (1431)(32)</u>	<u>Other Capital Projects Fund(39)</u>	<u>Debt Service(40)</u>	<u>Permanent(90)</u>	<u>Total</u>
1000 Instruction					
1100 Regular Programs - Elementary / Secondary					86,949,385.07
1200 Special Programs - Elementary / Secondary					37,100,390.46
1300 Vocational Education					5,755,520.61
1400 Other Instructional Programs - Elementary / Secondary					668,125.94
1500 Nonpublic School Programs					21,942.32
Total Instruction					\$130,495,364.40
2000 Support Services					
2100 Support Services - Students					8,637,182.24
2200 Support Services - Instructional Staff	1,998,907.83				7,212,062.30
2300 Support Services - Administration	75,852.09	116,979.61	347,273.00		11,110,013.63
2400 Support Services - Pupil Health					2,165,522.40
2500 Support Services - Business	53,767.82				1,912,805.53
2600 Operation and Maintenance of Plant Services					15,696,512.08
2700 Student Transportation Services					13,183,652.03
2800 Support Services - Central	658,989.48				4,148,057.25
2900 Other Support Services					127,780.05
Total Support Services	\$2,787,517.22	\$116,979.61	\$347,273.00		\$64,193,587.51
3000 Operation of Non-Instructional Services					
3200 Student Activities					4,669,383.91
3300 Community Services					133,721.41
Total Operation of Non-Instructional Services					\$4,803,105.32
4000 Facilities Acquisition, Construction and Improvement Services					
4500 Building Acquisition and Construction Services - Original and Additional	1,170,362.19				1,170,362.19
4600 Existing Building Improvement Services		7,160,342.33			7,160,342.33
Total Facilities Acquisition, Construction and Improvement Services	\$1,170,362.19	\$7,160,342.33			\$8,330,704.52
5000 Other Expenditures and Financing Uses					
5100 Debt Service / Other Expenditures and Financing Uses			60,135,702.00		78,486,135.34
5200 Interfund Transfers - Out			18,537.00		9,125,783.68
Total Other Expenditures and Financing Uses			\$60,154,239.00		\$87,611,919.02
TOTAL ACTUAL EXPENDITURES & OTHER FINANCING USES	\$3,957,879.41	\$7,277,321.94	\$60,501,512.00		\$295,434,680.77

LEA : 124159002 West Chester Area SD

Printed 12/19/2017 9:25:26 AM

PSERS Salary Data (Salary Data should relate to the General Fund only)

Amount Description	Amount
Total Salary Base for salaries subject to PSERS withholding	88,230,152.86
Total Federally Funded salaries subject to PSERS withholding	652,785.20
	<hr/>

Title I Expenditure Data

Amount Description	Amount
Expenditures Funded with Current Title I Funds	828,867.00
Expenditures Funded with Carry over Title I Funds	
	<hr/>
Total Title I Expenditure Data	\$828,867.00
	<hr/>

Title I ARRA Amount

Amount Description	Amount
Portion of Total Title I Expenditures funded with ARRA Title I	
	<hr/>

Benefits for Staff Relative to Collective Bargaining Agreements

	OBJECT	COVERED	NOT COVERED	TOTAL
10 General Fund				
	211 Medical Insurance			
	212 Dental Insurance			
	215 Eye Care Insurance			
	216 Prescription Insurance			
	271 Self-Insurance Medical Benefits	13,675,279.69	1,335,224.16	15,010,503.85
	272 Self-Insurance Dental Benefits	1,072,958.22	104,761.27	1,177,719.49
	275 Self-Insurance Eye Care Benefits	151,956.66	14,836.71	166,793.37
	276 Self-Insurance Prescription Benefits	4,357,411.86	425,448.09	4,782,859.95
	FUND TOTAL	\$19,257,606.43	\$1,880,270.23	\$21,137,876.66
50 Enterprise Fund	No Self Insurance data to report			
	211 Medical Insurance			
	212 Dental Insurance			
	215 Eye Care Insurance			
	216 Prescription Insurance			
	271 Self-Insurance Medical Benefits			
	272 Self-Insurance Dental Benefits			
	275 Self-Insurance Eye Care Benefits			
	276 Self-Insurance Prescription Benefits			
	FUND TOTAL			
60 Internal Service Fund	No Self Insurance data to report			
	211 Medical Insurance			
	212 Dental Insurance			
	215 Eye Care Insurance			
	216 Prescription Insurance			
	271 Self-Insurance Medical Benefits			
	272 Self-Insurance Dental Benefits			
	275 Self-Insurance Eye Care Benefits			
	276 Self-Insurance Prescription Benefits			
	FUND TOTAL			
Total of All Funds		\$19,257,606.43	\$1,880,270.23	\$21,137,876.66

LEA : 124159002 West Chester Area SD

Printed 12/19/2017 9:25:27 AM

Function	Special Education (Prior Year)	Nonspecial Education (Prior Year)	Total (Prior Year)	Special Education (Current Year)	Nonspecial Education (Current Year)	Total (Current Year)
2120 Guidance Services	1,851,243.28	2,776,864.92	4,628,108.20	1,976,674.87	2,965,012.30	4,941,687.17
2140 Psychological Services	1,814,994.86	201,666.10	2,016,660.96	1,758,822.29	195,424.70	1,954,246.99
2150 Speech Pathology and Audiology Services						
2160 Social Work Services	167,722.88	503,168.65	670,891.53	175,341.53	526,024.60	701,366.13
2260 Instruction and Curriculum Development Services	181,172.43	1,328,597.83	1,509,770.26	219,201.73	1,607,479.39	1,826,681.12
2350 Legal and Accounting Services	21,655.02	158,803.51	180,458.53	22,845.12	167,530.88	190,376.00
2420 Medical Services	206.40	1,513.60	1,720.00	189.00	1,386.00	1,575.00
2440 Nursing Services	219,463.59	1,609,399.69	1,828,863.28	226,319.73	1,659,678.05	1,885,997.78
2700 Student Transportation Services	3,675,528.33	9,330,374.35	13,005,902.68	3,495,536.26	9,688,115.77	13,183,652.03
Total	\$7,931,986.79	\$15,910,388.65	\$23,842,375.44	\$7,874,930.53	\$16,810,651.69	\$24,685,582.22

(PRINCIPAL AMOUNTS ONLY)

ALL GOVERNMENTAL FUND TYPES

	Short-Term Borrowing	General Obligation Bonds/Notes	Authority Building Obligations	Other Long-Term Debt	Other Post-Employment Benefits (OPEB)	Compensated Absences	Net Pension Liability	Total
1. Debt at Beginning of Fiscal Year		271,826,000.00			293,516.00	4,805,835.00	262,381,000.00	539,306,351.00
2. Additional Debt Incurred During Year		61,900,000.00			1,842,853.00	631,341.00	48,260,000.00	112,634,194.00
3. Retirements and Repayments		67,111,000.00			1,730,198.00	810,737.00	17,570,000.00	87,221,935.00
4. Debt at End of Fiscal Year		266,615,000.00			406,171.00	4,626,439.00	293,071,000.00	564,718,610.00
5. Accreted Interest at End Of Fiscal Year								
6. Total Debt and Accreted Interest		266,615,000.00			406,171.00	4,626,439.00	293,071,000.00	564,718,610.00
7. Current Portion P&I - Due within 1 year		24,239,332.00						24,239,332.00
8. Interest Paid during current fiscal year		10,187,294.00						10,187,294.00

(PRINCIPAL AMOUNTS ONLY)

ALL PROPRIETARY FUND TYPES

- 1. Debt at Beginning of Fiscal Year
- 2. Additional Debt Incurred During Year
- 3. Retirements and Repayments
- 4. Debt at End of Fiscal Year
- 5. Accreted Interest at End Of Fiscal Year
- 6. Total Debt and Accreted Interest
- 7. Current Portion P&I - Due within 1 year
- 8. Interest Paid during current fiscal year

Total Principal and Interest Payments Made by Your School - All Funds

Function	Fund		Principal (910)	Principal (920)	Interest (830)	Total (Principal +Interest)	Misc Other Uses (990)
5110	10	General Fund	8,176,000.00		10,174,433.34	18,350,433.34	
5110	20	Special Revenue Funds					
5110	30	Capital Projects Funds					
5110	40	Debt Service Fund					
5110	90	Permanent Fund					
5120	10	General Fund					
5120	20	Special Revenue Funds					
5120	30	Capital Projects Funds					
5120	40	Debt Service Fund	60,135,702.00			60,135,702.00	
Total Debt Payments - Governmental Funds			\$68,311,702.00		\$10,174,433.34	\$78,486,135.34	

Function	Fund		Principal (910)	Principal (920)	Interest (830)	Total (Principal +Interest)
5110	50	Enterprise Fund				
5110	60	Internal Service Fund				
5120	50	Enterprise Fund				
5120	60	Internal Service Fund				
Total Debt Payments - Proprietary Funds						

Bond Details
Governmental Funds

Debt Category	Debt Issue Date (MM/YYYY)	Principal Amounts Only			Debt at End of Fiscal Year	Current Portion Due Within One Year (Principal and Interest)	Interest Paid During Fiscal Year
		Debt at Beginning of Fiscal Year	Additions	Reductions / Repayments			
General Obligation Bonds/Notes – CIB	09/2016		9,690,000.00		9,690,000.00	262,803.00	161,843.00
General Obligation Bonds/Notes – CIB	02/2016		15,300,000.00	100,000.00	15,200,000.00	2,186,650.00	101,349.00
General Obligation Bonds/Notes – CIB	05/2016		32,030,000.00		32,030,000.00	931,321.00	
General Obligation Bonds/Notes – CIB	10/2015		4,880,000.00	565,000.00	4,315,000.00	781,664.00	68,232.00
General Obligation Bonds/Notes – CIB	04/2015	7,850,000.00		3,240,000.00	4,610,000.00	3,421,400.00	174,000.00
General Obligation Bonds/Notes – CIB	01/2014	12,000,000.00			12,000,000.00	489,763.00	489,763.00
General Obligation Bonds/Notes – CIB	01/2014	30,885,000.00		5,000.00	30,880,000.00	5,851,725.00	1,366,750.00
General Obligation Bonds/Notes – CIB	09/2014	57,635,000.00		355,000.00	57,280,000.00	2,483,100.00	2,220,200.00
General Obligation Bonds/Notes – CIB	01/2013	4,795,000.00		745,000.00	4,050,000.00	858,075.00	115,725.00
General Obligation Bonds/Notes – CIB	08/2012	21,000,000.00			21,000,000.00	630,000.00	630,000.00
General Obligation Bonds/Notes – CIB	08/2012	39,215,000.00		115,000.00	39,100,000.00	1,916,750.00	1,804,050.00
General Obligation Bonds/Notes – CIB	10/2011	8,420,000.00		515,000.00	7,905,000.00	733,764.00	220,351.00
General Obligation Bonds/Notes – CIB	12/2010	19,710,000.00		1,125,000.00	18,585,000.00	3,288,650.00	806,775.00
General Obligation Bonds/Notes – CIB	09/2010	4,975,000.00		4,975,000.00			
General Obligation Bonds/Notes – CIB	10/2009	9,975,000.00		5,000.00	9,970,000.00	403,667.00	96,519.00
General Obligation Bonds/Notes – CIB	11/2006	17,295,000.00		17,295,000.00			365,494.00
General Obligation Bonds/Notes – CIB	11/2006	36,825,000.00		36,825,000.00			1,560,723.00
General Obligation Bonds/Notes – CIB	11/2000	1,246,000.00		1,246,000.00			5,520.00
Compensated Absences		4,805,835.00	631,341.00	810,737.00	4,626,439.00		
Other Post-Employment Benefits (OPEB)		293,516.00	1,842,853.00	1,730,198.00	406,171.00		
Net Pension Liability		262,381,000.00	48,260,000.00	17,570,000.00	293,071,000.00		
Totals for Debt Entered:		\$539,306,351.00	\$112,634,194.00	\$87,221,935.00	\$564,718,610.00	\$24,239,332.00	\$10,187,294.00

General Fund (10)

Section 1: Tuition/Purchased Services as Reported within Expenditure Detail

	Amount
Tuition Reported in General Fund Expenditures 1000-560	14,524,666.08
Purchased Services in General Fund Expenditures 1000-594 and 1000-597	

Section 1 Total	\$14,524,666.08
------------------------	------------------------

Section 2: Tuition Paid to Institution Types During Fiscal Year

	Tuition Paid For Nonspecial Education	Tuition Paid For Special Education	Total
1 1306 Institutions		556,103.11	556,103.11
2 Institutionalized Children's Programs			
3 Juveniles Incarcerated in Adult Facilities			
4 Residential Treatment Facilities			
5 Other Local Education Agencies	11,140.21	70,994.85	82,135.06
6 Brick and Mortar Charter Schools	5,308,978.00	2,285,887.60	7,594,865.60
7 Cyber Charter Schools	1,345,265.37	514,966.57	1,860,231.94
8 Career and Technology Centers	2,597,177.00		2,597,177.00
9 Approved Private Schools		975,992.84	975,992.84
10 PA Chartered Schools for the Deaf and Blind			
11 Private Residential Rehabilitative Institutions	18,600.00	60,449.27	79,049.27
12 Juvenile Detention Centers			
13 Special Program Jointures			
14 Other Tuition Not Included Elsewhere In This Section	20,331.50	758,779.76	779,111.26

Section 2 Total	\$9,301,492.08	\$5,223,174.00	\$14,524,666.08
------------------------	-----------------------	-----------------------	------------------------

LEA : 124159002 West Chester Area SD

Printed 12/19/2017 9:25:30 AM

Food Service / Cafeteria Operations Fund (51)

3000 Operation of Non-Instructional Services

Total

500 Other Purchased Services

570 Food Service Management 3,030,214.00

Total Other Purchased Services \$3,030,214.00

600 Supplies

610 General Supplies 141,850.00

Total Supplies \$141,850.00

700 Property

740 Depreciation 56,040.00

Total Property \$56,040.00

800 Other Objects

890 Miscellaneous Expenditures 1,748.00

Total Other Objects \$1,748.00

Total 3000 Operation of Non-Instructional Services \$3,229,852.00

Food Service / Cafeteria Operations Fund (51)

	<u>Elementary</u>	<u>Secondary</u>	<u>Federal</u>	<u>Total</u>
3100 Food Services				
500 <u>Other Purchased Services</u>				
570 Food Service Management				3,030,214.00
Total Other Purchased Services				\$3,030,214.00
600 <u>Supplies</u>				
610 General Supplies				141,850.00
Total Supplies				\$141,850.00
700 <u>Property</u>				
740 Depreciation				56,040.00
Total Property				\$56,040.00
800 <u>Other Objects</u>				
890 Miscellaneous Expenditures				1,748.00
Total Other Objects				\$1,748.00
Total 3100 Food Services				\$3,229,852.00

	<u>Food Service(51)</u>	<u>Child Care Operations(52)</u>	<u>Other Enterprise(58)</u>	<u>Internal Service(60)</u>	<u>Total</u>
3000 <u>Operation of Non-Instructional Services</u>					
3100 Food Services	3,229,852.00				3,229,852.00
Total Operation of Non-Instructional Services	\$3,229,852.00				\$3,229,852.00
TOTAL ACTUAL EXPENDITURES & OTHER FINANCING USES	\$3,229,852.00				\$3,229,852.00